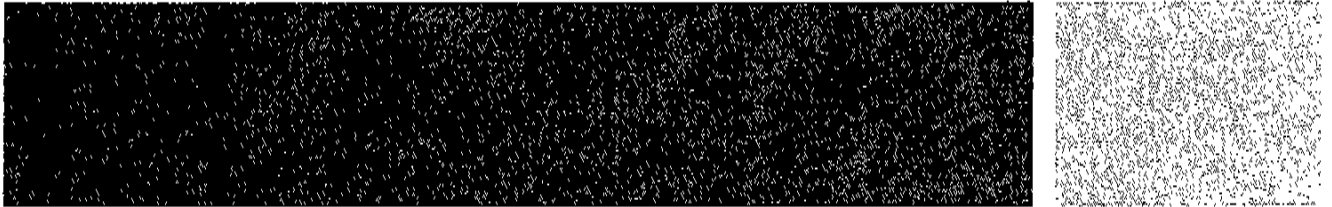


Australian Government



Building
the education revolution



DEPARTMENT OF EDUCATION AND
TRAINING
BUILDING THE EDUCATION REVOLUTION
IMPLEMENTATION PLAN

Introduction

1. This template enables State and Territory Governments and Block Grant Authorities to provide information to the Australian Government on the implementation of the Building the Education Revolution (BER) program. BER complements existing and planned investments by states and territories and non-government systems and schools.

The three elements of BER are:

- (a) \$12.4 billion for Primary Schools for the 21st Century – all Australian primary schools, K-12 schools (primary school component) and special schools will be eligible to apply for funding to build new iconic facilities such as libraries and multipurpose halls or to upgrade existing facilities.
 - (b) \$1 billion for Science and Language Centres for the 21st Century Secondary Schools – all secondary schools are eligible to apply for funding, on a competitive basis, for the construction of new science laboratories or language learning centres.
 - (i) \$1.288 billion for the National School Pride program – all schools in Australia, government and non-government, will be eligible to apply for funding for minor capital works and maintenance projects.
2. As BER is a critical component of the Australian Government's economic stimulus package it is essential that construction and maintenance work commences as quickly as possible.
 3. This Implementation Template forms part of the bilateral agreement between the Commonwealth and [State/Territory/BGA].
 4. These implementation arrangements will commence as soon as the Commonwealth and the other Party signs bilateral will be subject to re-negotiation as agreed by both parties from time to time, and will expire on 31 December 2012, or earlier termination as agreed in writing by the Parties.

Commencing Projects

5. Outline how you will call for, assess, prioritise and select projects to meet the requirements of each of the three elements of BER?

(a) Primary Schools for the 21st Century

Each school principal has been requested to nominate projects.

Project nomination closing date is 16/3/09 and nominations are via web application process to facilitate. Nominations required statement of school community agreement

DETNSW will review nominations in a central planning unit being established and prepare submissions to Commonwealth for the rounds of applications.

The central planning unit will consult with schools if nominations do not fit within guidelines, are outside the upper funding limits or any other issue requiring resolution and seek Principal/school community agreement to revised nomination if required.

Prioritisation and selection of projects will be based on the proposed project's adherence to guidelines and ease of delivery.

(b) Science and Language Centres for 21st Century Secondary Schools

DETNSW will shortly be consulting with Principals regarding the nomination process for science and Language Centres.

There is currently a major science laboratory refurbishment program underway in NSW in 161 high schools. Therefore it is likely that NSW will nominate those high and central schools that are not included in the present program and that require a science facility upgrade.

In addition nominations will be requested for language centres

(c) National School Pride program

Basis of projects nominations is the information contained in the DETNSW Asset Condition Assessment Survey completed in the last half of 2008 which identified all refurbishment works now required in all schools.

The condition assessment process was developed with input from NSW Primary Principals Association and the Secondary Principals Council and each assessment was completed in consultation with the Principal.

If after addressing the works identified in the Condition Assessment there is funding still available under the indicative funding limit then further projects will be added from the list of minor capital works that Principals nominated in 2008 as priority projects for their school.

In addition each school principal has been requested to nominate additional projects in accordance with the Guidelines in the email dated 23/2/09 which will be included should individual school funding allow.

6. What strategies will be used to fast track application and assessment outcomes?

See above – strategies include letter to principals, web based nomination process, Regional Asset management teams in consultation with school principals to develop and define projects, website established with design template details and responses to all questions clarified and available to all on website.

DETNSW will review nominations in a central planning unit being established and prepare submissions to Commonwealth for the various rounds of applications. The unit will be staffed with a core of expert and experienced school facility planners plus support staff who can fast track assessment.

A special unit is being established within the Department's integrated program office to case manage difficult projects and review progress of assessments.

7. Outline how you will manage applications from schools marked for closure or for merger?

There are 10 schools currently with the status 'Teacher withdrawn' pending final decision on permanent closure. There is neither a principal nor school community to submit nominations. In any case nominations from these schools would not be supported.

There are currently no schools approved for merger.

Project Management

8. What ongoing project management of each project will be offered?

Site specific and post construction project management will be handled by the Departments Asset Management Units which are geographically dispersed across NSW. The Asset Management Units have primary responsibility for managing the Departments property holdings including minor works, maintenance and ongoing management of major capital works projects when completed. The BER projects will be handed over and managed on the same basis as existing projects using the same procedures and systems.

The Asset Management Units are supported by Department of Commerce, as the Departments construction authority, and by industry trade contractors.

Whilst the primary construction delivery responsibility for BER projects will rest with engaged managing contractors, the Departments Asset Management Units are expected to have a major role in providing site specific project information and maintaining an interface with and advising school communities on construction programming conflicts and data collection in preparation for accepting ongoing maintenance responsibilities.

9. What project management approach will be adopted?

The nine principles of project management will be followed.

Proposals that have been assessed as meeting the BER guidelines will be scoped with input from the school and a project brief developed. Site specific issues will be taken into consideration. NSW DET standard design templates will be used where appropriate and possible.

Delivery of a major component of the BER program will be through managing contractors. The managing contractors will be engaged through a competitive Expression of Interest and Tender process, in accordance with NSW Government Procurement Guidelines. The contractors invited to tender will be drawn from a pre-qualified contractor panel. The managing contractors will be awarded packages, developed based on DET school regions.

The managing contractors will prepare the design and construction documentation, manage any planning/authorities approvals required, prepare the construction program and procure, manage and coordinated construction and commissioning of the works.

The responsibility for reporting and stakeholder management will be undertaken jointly by the managing contractors and NSW DET staff, as appropriate.

10. How will you ensure every school can maximise opportunities under BER? How will you assist smaller or less resourced schools/communities to participate?

The nomination process detailed above includes all schools including the smaller or less resourced schools. Project Officers from the regional asset management units are in contact with all schools to help develop nominations that conform to the Guidelines.

In addition the department has a network of school education directors across the state who have strong relationships with their principals and can assist the principals and school communities in determining how best to maximise the opportunities BER officers.

The department has also set up a hotline for anyone needing more information on BER. We are trying to answer all questions either immediately or if more research is needed, within 24 hours. Generic answers to commonly asked questions are also being placed on our intranet so principals can gain a better understanding of what is achievable under BER.

We are also sending out regular bulletins to all principals to remind them of the need to submit their nomination forms and highlighting any developments that they may need to know about.

Building

11. List the design templates to be used (and attach copies for the Commonwealth), or if design templates are not being used detail why this is reasonable and appropriate.

There are nine different types of Design Templates for facilities in primary, central (primary component), and special schools which were forwarded to DEEWR on 3/3/09 for the following facilities:-

- Home base (classroom) facility
- Library facility
- Hall facility
- Special School Home base (classroom) facility
- Student Toilet facility
- Administration facility
- Canteen facility
- Outdoor Learning Area facility
- Special Programs facility

12. How will sustainable building principles be incorporated into construction, refurbishments and maintenance, wherever possible?

Where possible, school buildings are oriented to the solar north and constructed largely from plantation grown timber or timber from sustainable managed growth forests.

A range of other recycled and re-usable materials are also used, such as a mortar mix which allows for the brickwork to be re-used.

A number of energy efficient measures are employed in school construction. Some examples include the use of roof strip lights integrated with roof ventilation to reduce heat penetration; insulation to both roof and wall cavities; energy efficient lights operated by an automatic switching system; energy efficient white goods and electrical equipment; the use of natural cross ventilation assisted by roof turbo ventilators to minimise the need for air conditioners and heating systems designed for optimal efficiency.

Mains energy consumption will be contained through the installation of photovoltaic cells,

Water wastage is minimised by the installation of internal flow controllers in all taps, the use of dual flushing cisterns and waterless urinals in new schools. Low water use landscaping is also incorporated in education facility design.

Rainwater tanks are installed to irrigate school grounds and gardens.

A number of measures are also employed to achieve landscapes which are sustainable and have minimal environmental impact. To this end, significant trees on school sites are retained wherever possible and the habitats of native flora and fauna preserved.

The Community

13. Outline the steps to be taken to achieve broad community consultation, including incorporating the views of relevant Principals, Parents and Citizens or Parents and Friends groups, on work to be undertaken?

NSWDET has informed principals that parent organisations must be included in discussions. Templates have been designed for principals to communicate to parents and NSW DET is making information specifically targeted at parents available on its website.

The online nomination form requires that principals confirm that their parent organisation has been consulted before submitting their application.

NSW Department of Education and Training - Building the Education Revolution Implementation Plan

14. Outline how you will ensure new and refurbished facilities in primary schools will be available for broad community use at no cost or low cost?

The NSW Department of Education and Training's community use of school facilities policy guides supports community access to school facilities at low or no cost, and provides a suggested schedule of rates.

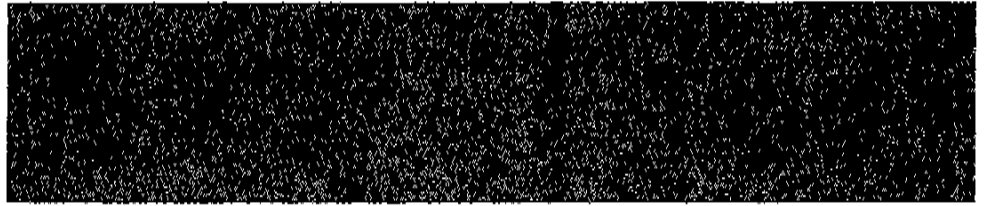
We will ensure this policy is implemented in regard to community use of new and refurbished facilities funded under BER.

Data Entry

15. Will you undertake data entry on your school projects?
- (a) If yes, how will this be achieved? Or
- (b) If not, how will you ensure your schools meet all data entry requirement as required?

As stated above the project nomination from schools is via a web application process. The information provided by schools will be supplemented centrally to address the various reporting requirements of the BER Guidelines and the IT Guidelines.

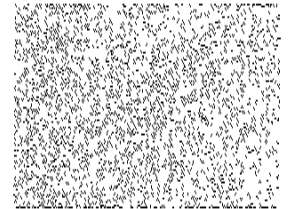
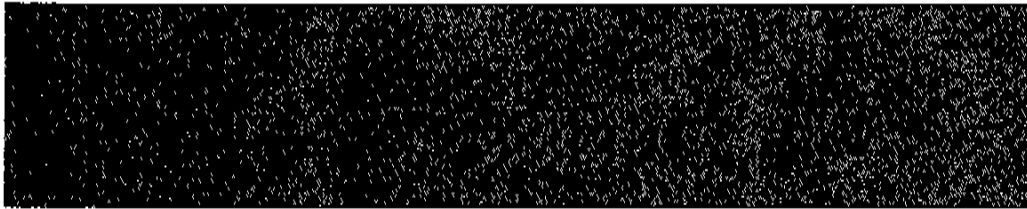
Key Staff:**BER State Coordinator: Alastair Hunter****Title:** Deputy Director-General, Finance and Infrastructure**E-mail:** alastair.hunter@det.nsw.edu.au**Telephone:** 9561 8425**Mobile:** 0421 098 265**Fax:** 9561 8469**Alternative Contact: Hugo Harmstorf****Title:** Interim BER Program Director**E-mail:** hugo.harmstorf@det.nsw.edu.au**Telephone:** 9561 1097**Mobile:** -**Fax:** 9561 8469



Australian Government



Building
the education revolution



DEPARTMENT OF EDUCATION AND
TRAINING
BUILDING THE EDUCATION REVOLUTION
IMPLEMENTATION PLAN

Introduction

1. This template enables State and Territory Governments and Block Grant Authorities to provide information to the Australian Government on the implementation of the Building the Education Revolution (BER) program. BER complements existing and planned investments by states and territories and non-government systems and schools.

The three elements of BER are:

- (a) \$12.4 billion for Primary Schools for the 21st Century – all Australian primary schools, K-12 schools (primary school component) and special schools will be eligible to apply for funding to build new iconic facilities such as libraries and multipurpose halls or to upgrade existing facilities.
 - (b) \$1 billion for Science and Language Centres for the 21st Century Secondary Schools – all secondary schools are eligible to apply for funding, on a competitive basis, for the construction of new science laboratories or language learning centres.
 - (i) \$1.288 billion for the National School Pride program – all schools in Australia, government and non-government, will be eligible to apply for funding for minor capital works and maintenance projects.
2. As BER is a critical component of the Australian Government's economic stimulus package it is essential that construction and maintenance work commences as quickly as possible.
 3. This Implementation Template forms part of the bilateral agreement between the Commonwealth and [State/Territory/BGA].
 4. These implementation arrangements will commence as soon as the Commonwealth and the other Party signs bilateral will be subject to re-negotiation as agreed by both parties from time to time, and will expire on 31 December 2012, or earlier termination as agreed in writing by the Parties.

Commencing Projects

5. Outline how you will call for, assess, prioritise and select projects to meet the requirements of each of the three elements of BER?

(a) Primary Schools for the 21st Century

Each school principal has been requested to nominate projects.

Project nomination closing date is 16/3/09 and nominations are via web application process to facilitate. Nominations required statement of school community agreement

DETNSW will review nominations in a central planning unit being established and prepare submissions to Commonwealth for the rounds of applications.

The central planning unit will consult with schools if nominations do not fit within guidelines, are outside the upper funding limits or any other issue requiring resolution and seek Principal/school community agreement to revised nomination if required.

Prioritisation and selection of projects will be based on the proposed project's adherence to guidelines and ease of delivery.

(b) Science and Language Centres for 21st Century Secondary Schools

DETNSW will shortly be consulting with Principals regarding the nomination process for science and Language Centres.

There is currently a major science laboratory refurbishment program underway in NSW in 161 high schools. Therefore it is likely that NSW will nominate those high and central schools that are not included in the present program and that require a science facility upgrade.

In addition nominations will be requested for language centres

(c) National School Pride program

Basis of projects nominations is the information contained in the DETNSW Asset Condition Assessment Survey completed in the last half of 2008 which identified all refurbishment works now required in all schools.

The condition assessment process was developed with input from NSW Primary Principals Association and the Secondary Principals Council and each assessment was completed in consultation with the Principal.

If after addressing the works identified in the Condition Assessment there is funding still available under the indicative funding limit then further projects will be added from the list of minor capital works that Principals nominated in 2008 as priority projects for their school.

In addition each school principal has been requested to nominate additional projects in accordance with the Guidelines in the email dated 23/2/09 which will be included should individual school funding allow.

6. What strategies will be used to fast track application and assessment outcomes?

See above – strategies include letter to principals, web based nomination process, Regional Asset management teams in consultation with school principals to develop and define projects, website established with design template details and responses to all questions clarified and available to all on website.

DETNSW will review nominations in a central planning unit being established and prepare submissions to Commonwealth for the various rounds of applications. The unit will be staffed with a core of expert and experienced school facility planners plus support staff who can fast track assessment.

A special unit is being established within the Department's integrated program office to case manage difficult projects and review progress of assessments.

7. Outline how you will manage applications from schools marked for closure or for merger?

There are 10 schools currently with the status "Teacher withdrawn" pending final decision on permanent closure. There is neither a principal nor school community to submit nominations. In any case nominations from these schools would not be supported.

There are currently no schools approved for merger.

Project Management

8. What ongoing project management of each project will be offered?

Site specific and post construction project management will be handled by the Departments Asset Management Units which are geographically dispersed across NSW. The Asset Management Units have primary responsibility for managing the Departments property holdings including minor works, maintenance and ongoing management of major capital works projects when completed. The BER projects will be handed over and managed on the same basis as existing projects using the same procedures and systems.

The Asset Management Units are supported by Department of Commerce, as the Departments construction authority, and by industry trade contractors.

Whilst the primary construction delivery responsibility for BER projects will rest with engaged managing contractors, the Departments Asset Management Units are expected to have a major role in providing site specific project information and maintaining an interface with and advising school communities on construction programming conflicts and data collection in preparation for accepting ongoing maintenance responsibilities.

9. What project management approach will be adopted?

The nine principles of project management will be followed.

Proposals that have been assessed as meeting the BER guidelines will be scoped with input from the school and a project brief developed. Site specific issues will be taken into consideration. NSW DET standard design templates will be used where appropriate and possible.

Delivery of a major component of the BER program will be through managing contractors. The managing contractors will be engaged through a competitive Expression of Interest and Tender process, in accordance with NSW Government Procurement Guidelines. The contractors invited to tender will be drawn from a pre-qualified contractor panel. The managing contractors will be awarded packages, developed based on DET school regions.

The managing contractors will prepare the design and construction documentation, manage any planning/authorities approvals required, prepare the construction program and procure, manage and coordinated construction and commissioning of the works.

The responsibility for reporting and stakeholder management will be undertaken jointly by the managing contractors and NSW DET staff, as appropriate.

10. How will you ensure every school can maximise opportunities under BER? How will you assist smaller or less resourced schools/communities to participate?

The nomination process detailed above includes all schools including the smaller or less resourced schools. Project Officers from the regional asset management units are in contact with all schools to help develop nominations that conform to the Guidelines.

In addition the department has a network of school education directors across the state who have strong relationships with their principals and can assist the principals and school communities in determining how best to maximise the opportunities BER officers.

The department has also set up a hotline for anyone needing more information on BER. We are trying to answer all questions either immediately or if more research is needed, within 24 hours. Generic answers to commonly asked questions are also being placed on our intranet so principals can gain a better understanding of what is achievable under BER.

We are also sending out regular bulletins to all principals to remind them of the need to submit their nomination forms and highlighting any developments that they may need to know about.

Building

11. List the design templates to be used (and attach copies for the Commonwealth), or if design templates are not being used detail why this is reasonable and appropriate.

There are nine different types of Design Templates for facilities in primary, central (primary component), and special schools which were forwarded to DEEWR on 3/3/09 for the following facilities:-

Home base (classroom) facility
 Library facility
 Hall facility
 Special School Home base (classroom) facility
 Student Toilet facility
 Administration facility
 Canteen facility
 Outdoor Learning Area facility
 Special Programs facility

12. How will sustainable building principles be incorporated into construction, refurbishments and maintenance, wherever possible?

Where possible, school buildings are oriented to the solar north and constructed largely from plantation grown timber or timber from sustainable managed growth forests.

A range of other recycled and re-usable materials are also used, such as a mortar mix which allows for the brickwork to be re-used.

A number of energy efficient measures are employed in school construction. Some examples include the use of roof strip lights integrated with roof ventilation to reduce heat penetration; insulation to both roof and wall cavities; energy efficient lights operated by an automatic switching system; energy efficient white goods and electrical equipment; the use of natural cross ventilation assisted by roof turbo ventilators to minimise the need for air conditioners and heating systems designed for optimal efficiency.

Mains energy consumption will be contained through the installation of photovoltaic cells,

Water wastage is minimised by the installation of internal flow controllers in all taps, the use of dual flushing cisterns and waterless urinals in new schools. Low water use landscaping is also incorporated in education facility design.

Rainwater tanks are installed to irrigate school grounds and gardens.

A number of measures are also employed to achieve landscapes which are sustainable and have minimal environmental impact. To this end, significant trees on school sites are retained wherever possible and the habitats of native flora and fauna preserved.

The Community

13. Outline the steps to be taken to achieve broad community consultation, including incorporating the views of relevant Principals, Parents and Citizens or Parents and Friends groups, on work to be undertaken?

NSWDET has informed principals that parent organisations must be included in discussions. Templates have been designed for principals to communicate to parents and NSW DET is making information specifically targeted at parents available on its website.

The online nomination form requires that principals confirm that their parent organisation has been consulted before submitting their application.

NSW Department of Education and Training - Building the Education Revolution Implementation Plan

14. Outline how you will ensure new and refurbished facilities in primary schools will be available for broad community use at no cost or low cost?

The NSW Department of Education and Training's community use of school facilities policy guides supports community access to school facilities at low or no cost, and provides a suggested schedule of rates.

We will ensure this policy is implemented in regard to community use of new and refurbished facilities funded under BER.

Data Entry

15. Will you undertake data entry on your school projects?
- (a) If yes, how will this be achieved? Or
- (b) If not, how will you ensure your schools meet all data entry requirement as required?

As stated above the project nomination from schools is via a web application process. The information provided by schools will be supplemented centrally to address the various reporting requirements of the BER Guidelines and the IT Guidelines.

Key Staff:**BER State Coordinator: Alastair Hunter****Title:** Deputy Director-General, Finance and Infrastructure**E-mail:** alastair.hunter@det.nsw.edu.au**Telephone:** 9561 8425**Mobile:** 0421 098 265**Fax:** 9561 8469**Alternative Contact: Hugo Harmstorf****Title:** Interim BER Program Director**E-mail:** hugo.harmstorf@det.nsw.edu.au**Telephone:** 9561 1097**Mobile:** -**Fax:** 9561 8469