

Appendix B - Performance Indicator Specifications

Preschool Reform Agreement – 2022

Appendix B - Performance Indicator Specifications will be updated annually over the course of the Preschool Reform Agreement. This version of the Specifications only applies to performance indicators for the 2022 program year.

Contents

- ACKNOWLEDGMENTS 3**
- ABBREVIATIONS 3**
- INTRODUCTION 4**
 - National Early Childhood Education and Care Collection (NECECC)..... 4
 - Early Childhood Education and Care National Minimum Data Set 5
 - Definitions 5
 - Early childhood education program 5
 - Quality early childhood education program 5
 - Qualified early childhood teacher 5
 - Year before full-time schooling (YBFS) 5
 - Proportion of early childhood education programs delivered by a qualified early childhood teacher (non-payment performance indicator) 6
 - All programs..... 6
 - Proportion of children enrolled in the year before full-time school in quality early childhood education program(s) (Performance Indicator 1-3) 8
 - PI 1 All children 8
 - PI 2 Aboriginal and Torres Strait Islander children 10
 - PI 3 Disadvantaged children..... 12
 - Proportion of enrolled children, enrolled in the year before full-time school, in quality early childhood education program(s) for 600 hours per year (Performance Indicator 4-6)15
 - PI 4 All children15
 - PI 5 Aboriginal and Torres Strait Islander children17
 - PI 6 Disadvantaged children..... 19
 - Proportion of enrolled children who attend, in the year before full-time school, quality early childhood education program(s) for 600 hours per year (non-payment performance indicator) 23
 - All children..... 23
 - Aboriginal and Torres Strait Islander children..... 25
 - Disadvantaged children27
- APPENDIX B.1: CREATING UNIQUE CHILD RECORDS FROM EPISODE RECORDS 32**
 - Linking of records across data sources..... 32
 - Reporting Child Counts 32
- APPENDIX B.2: VALUES FOR INCLUSION IN PI CALCULATIONS 34**
- LIST OF PI FLOW CHARTS 35**
- LIST OF FIGURES 35**
- REFERENCES 35**

Acknowledgments

These Performance Indicator Specifications for the Preschool Reform Agreement – 2022 have been developed by the Australian Institute of Health and Welfare (AIHW) in conjunction with the Australian Bureau of Statistics (ABS) and Australian Government Department of Education, Skills and Employment.

Abbreviations

ABS	Australian Bureau of Statistics
AIHW	Australian Institute of Health and Welfare
ASGS	Australian Statistical Geography Standard
CCSS	Child Care Subsidy System
COAG	Council of Australian Governments
ECEC	Early Childhood Education and Care
ERP	Estimated resident population
IRSD	Index of Relative Socio-economic Disadvantage
METeOR	AIHW's Metadata Online Registry
NECECC	National Early Childhood Education and Care Collection
NMDS	National Minimum Data Set
NP UAECE	National Partnership Agreement on Universal Access to Early Childhood Education
PI	Performance indicator
PRA	Preschool Reform Agreement
SA	Statistical Area
SEIFA	Socio-Economic Indexes for Areas
SLK	Statistical linkage key
URL	Unit record level
YBFS	Year before full-time school

Introduction

The objective of the Preschool Reform Agreement (the Agreement-2022) is to facilitate children's early learning and development and transition to school by:

- maintaining universal access to affordable, quality preschool programs for all children
- improving participation in preschool programs
- maximising the benefit of the preschool year by improving outcomes for children.

For the 2022 program year the performance framework from the former National Partnership on Universal Access to Early Childhood Education (UANP) will apply. These include:

- **Teacher qualifications**
The proportion of early childhood education programs delivered by a qualified early childhood teacher
- **Access to quality program (performance indicator 1-3 in the Agreement)**
The proportion of children enrolled in the year before full-time school in quality early childhood education program(s)
- **Access to a quality 600 hour program (performance indicator 4-6 in the Agreement)**
The proportion of enrolled children, enrolled in the year before full-time school, in quality early childhood education program(s) for 600 hours per year
- **Attendance**
The proportion of enrolled children who attend, in the year before full-time school, quality early childhood education program(s) for 600 hours per year.

This document details the specifications for nationally comparable measurement of the PIs. These specifications aim to guide the calculation of the PIs at the national level in order to measure national progress against performance benchmarks, and to allow comparisons to be made at the state and territory level.

The annual National Early Childhood Education and Care Collection (NECECC) is the primary data source for the monitoring of progress and the measurement of achievement against benchmarks under the Agreement. Jurisdictions may provide contextual information to aid interpretation should they wish to do so.

The national PI Specifications have been developed by the Australian Institute of Health and Welfare (AIHW) in conjunction with the Australian Bureau of Statistics (ABS) and the Australian Government Department of Education, Skills and Employment.

National Early Childhood Education and Care Collection (NECECC)

The NECECC aims to provide nationally comparable information on early childhood education and care. It has assisted in progress reporting for the UANP – 2018–2021, and the previous, NP UAECE – 2016-17 and 2015, NP UAECE and National Partnership Agreement on Early Childhood Education.

Data from the NECECC have been published annually by the ABS and are available on their website: <https://www.abs.gov.au/statistics/people/education/preschool-education-australia/latest-release> for the latest release and previous releases.

Supporting information is available in the following publications:

- *National Early Childhood Education and Care Collection: Concepts, Sources and Methods*
<https://www.abs.gov.au/ausstats/abs@.nsf/mf/4240.0.55.001>

- Preschool Education, Australia methodology
<https://www.abs.gov.au/methodologies/preschool-education-australia-methodology/2020>

Early Childhood Education and Care National Minimum Data Set

The NECECC is underpinned by data standards specified in the Early Childhood Education and Care National Minimum Data Set (ECEC NMDS), which is maintained by the AIHW in the online metadata registry, METeOR, for the latest standards

<https://meteor.aihw.gov.au/content/index.phtml/itemId/745996>

The PI Specifications are based on data elements in the UANP – 2018–2021. The relevant ECEC NMDS data element names and corresponding METeOR identifiers are included in the PI Specifications. Further information on these can be found on METeOR using the unique identifier.

Definitions

The NP UAECE – 2015 defined a number of terms that are used within the Agreement, and these are unchanged in the the Agreement–2022. These definitions have been operationalised, where required, for implementation in the ECEC NMDS 2021 and the NECECC. Although these definitions may therefore be expressed differently in the ECEC NMDS, their interpretation is consistent with the the Agreement–2022.

The definitions of the terms below underlie the PI Specifications and should be read in conjunction to assist interpretation.

Early childhood education program

The definition of an early childhood education program used in the PI Specifications is available in the glossary of the ECEC NMDS 2021 in METeOR.

It is possible for multiple programs to be offered within the same service provider; however, the lowest reporting level common to all states and territories within the NECECC is the service provider level. Information is therefore collected at the service provider level for reporting in the NECECC, as specified in the ECEC NMDS, and the service provider is used in the PI Specifications as a proxy for programs.

A definition of a *quality* early childhood education program is also included within the definition of an early childhood education program.

Quality early childhood education program

The definition of a *quality early childhood program* in the Agreement–2022 and the ECEC NMDS 2021– includes three components that relate specifically to quality:

- delivery in accordance with the Early Years Learning Framework,
- delivery in accordance with the National Quality Standard, and
- delivery by a qualified early childhood teacher.

Qualified early childhood teacher

The definition of a qualified early childhood teacher used in the PI Specifications is available in the glossary of the ECEC NMDS 2021 in METeOR.

Year before full-time schooling (YBFS)

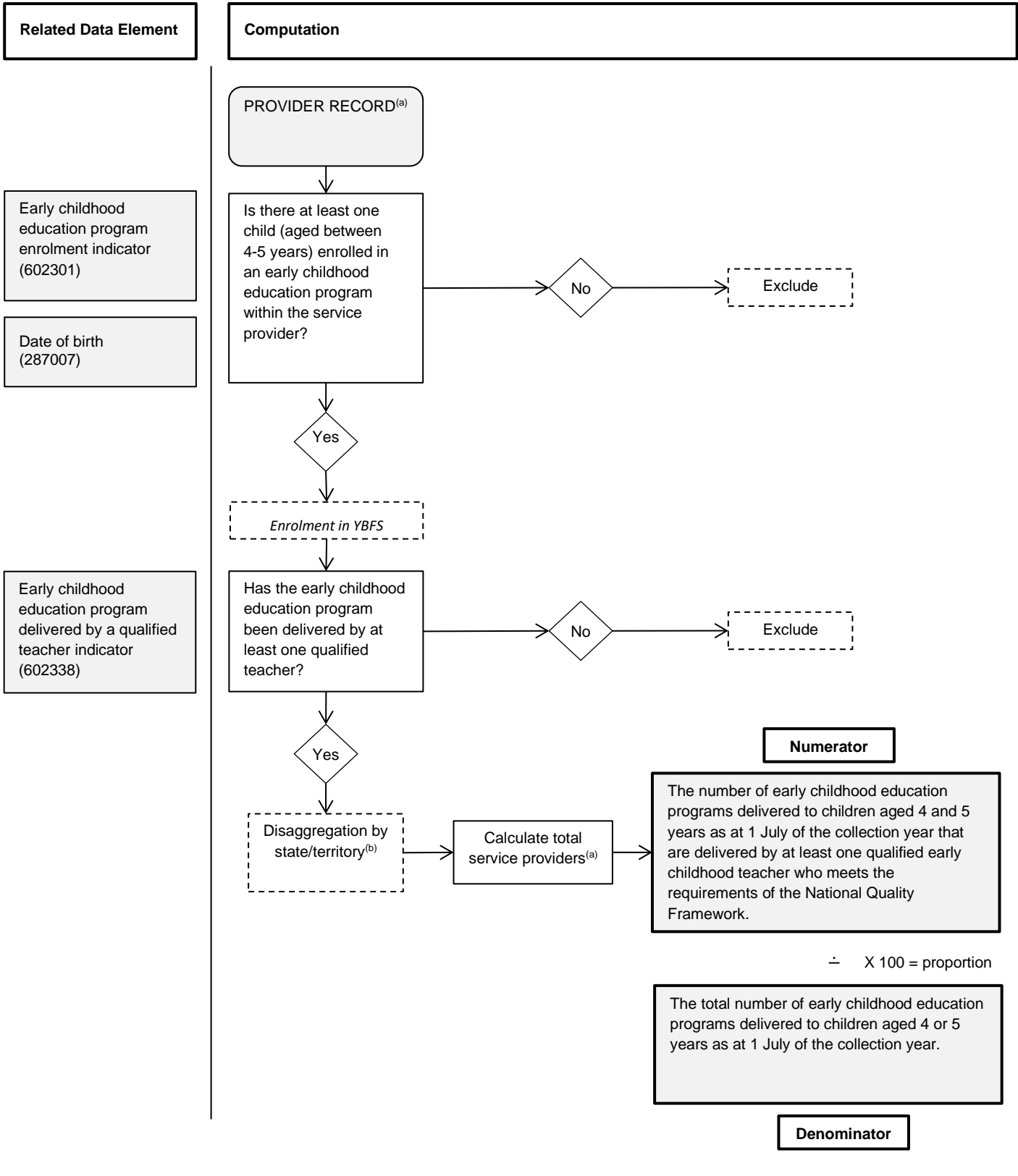
In the national PI Specifications, the year before full-time schooling (YBFS) population is defined as all children aged 4 and 5 years old, including 5 year olds who are reported as repeaters. For further information about this definition and how it differs to YBFS as used in the ABS *Preschool Education, Australia* publication, refer to the 2020 issue of *Preschool Education, Australia – Explanatory Notes* <https://www.abs.gov.au/methodologies/preschool-education-australia-methodology/2020#appendix-4-state-specific-year-before-full-time-schooling>.

Proportion of early childhood education programs delivered by a qualified early childhood teacher (non-payment performance indicator)

All programs

Indicator details	
Description	The proportion of early childhood education programs delivered by at least one qualified early childhood teacher to children in the year before full-time schooling.
Numerator	The number of early childhood education programs delivered to children aged 4 and 5 years as at 1 July of the collection year that are delivered by at least one qualified early childhood teacher who meets the requirements of the National Quality Framework.
Numerator data elements	<p><u>Service provider organisation URL data elements:</u></p> <ul style="list-style-type: none"> Early childhood education program delivered by a qualified teacher indicator (METeOR Id 602338) <p><u>Child/Person URL data elements:</u></p> <ul style="list-style-type: none"> Early childhood education program enrolment indicator (METeOR Id 602301) Date of birth (METeOR Id 287007)
Denominator	The total number of early childhood education programs delivered to children aged 4 or 5 years as at 1 July of the collection year.
Denominator data elements	<p><u>Child/Person URL data elements:</u></p> <ul style="list-style-type: none"> Early childhood education program enrolment indicator (METeOR Id 602301) Date of birth (METeOR Id 287007)
Computation	<p>Numerator ÷ Denominator X 100 = Proportion</p> <p>Refer to flow chart PI 1: Proportion of early childhood education programs delivered by a qualified early childhood teacher</p>
Presentation	Proportion
Calculation rules	<p>This performance indicator requires service provider level data.</p> <p>For the purposes of Agreement measurement, a service provider is deemed equivalent to an early childhood education program.</p> <p>Age is calculated for children using their date of birth, referenced to their age at 1 July of the collection year.</p> <p><u>Numerator:</u></p> <p>The numerator is obtained by summing all early childhood education programs with children aged 4 or 5 years who have a 'Yes' response against the child level data element 'Early childhood education program enrolment indicator'—representing enrolment in the year before full-time schooling—and a 'Yes' response against the service provider level data element 'Early childhood education program delivered by a qualified teacher indicator'.</p> <p><u>Denominator:</u></p> <p>The denominator is obtained by summing all early childhood education programs with enrolled children aged 4 and 5 years as at 1 July of the collection year.</p>
Data source(s)	<p><u>Numerator:</u> NECECC</p> <p><u>Denominator:</u> NECECC</p>
Frequency of data source collection	<p><u>Numerator:</u> Annual</p> <p><u>Denominator:</u> Annual</p>

PROPORTION OF EARLY CHILDHOOD EDUCATION PROGRAMS DELIVERED BY A QUALIFIED EARLY CHILDHOOD TEACHER



(a) Service provider counts are the number of unique service providers across files.

(b) The location where the early childhood education program was delivered.

Note: Refer to Appendix B for details on the inclusion and exclusion of response categories in the computation.

Proportion of children enrolled in the year before full-time school in quality early childhood education program(s) (Performance Indicator 1-3)

PI 1 All children

Indicator details	
Description	The proportion of children aged 4 and 5 years as at 1 July of the collection year, who are enrolled in the year before full-time schooling in quality early childhood education program(s).
Numerator	The number of children aged 4 and 5 years as at 1 July of the collection year, who are enrolled in the year before full-time schooling in at least one quality early childhood education program.
Numerator data elements	<p><u>Child/Person URL data elements:</u></p> <ul style="list-style-type: none"> • Early childhood education program enrolment indicator (METeOR Id 602301) • Date of birth (METeOR Id 287007)
Denominator	Estimated number of children aged 4 years, as at 30 June of the collection year.
Denominator data elements	<p><u>Child/Person URL data elements:</u></p> <ul style="list-style-type: none"> • Estimated Resident Population (ERP) of children aged 4, by state/territory, (METeOR Id 388656)
Computation	<p>Numerator ÷ Denominator X 100 = Proportion</p> <p>Refer to flow chart PI 2: Proportion of children enrolled in the year before full-time school in quality early childhood education programs</p>
Presentation	Proportion
Calculation rules	<p>Age is calculated for children using their date of birth, referenced to their age at 1 July of the collection year.</p> <p>This performance indicator requires child level data. For instructions on creating unique child records from child episode data, including how to treat multiple enrolments and repeat enrolments over time, see Appendix A: 'Creating unique child records from episode records'. If children are enrolled in multiple services, they should be counted in the numerator/denominator if they meet the criteria in at least one service.</p> <p><u>Numerator:</u></p> <p>The numerator is obtained by summing all children aged 4 or 5 years who have a 'Yes' response against the child level data element 'Early childhood education program enrolment indicator' (representing enrolment in the year before full-time schooling).</p> <p><u>Denominator:</u></p> <p>To be based on the June release of the collection year of the ABS Census-based ERP for 4 year olds.</p>
Identifiers	<p>Person ID (SLK 581):</p> <p>The SLK will provide a unique identifier for the vast majority of children. For the small percentage that may have the same SLK, legitimate duplicates can be identified by jurisdictions by using a child/student database to check the name, date of birth, sex and address details of each child with an identical SLK.</p> <p>Matching SLKs should be identified appropriately. See Appendix A: 'Creating unique child records from episode records'.</p>
Identifier data elements	<p><u>Child/Person URL data elements:</u></p> <ul style="list-style-type: none"> • Statistical linkage key 581 (METeOR Id 349895)
Data collection details	
Data source(s)	<u>Numerator:</u> NECECC

	<u>Denominator:</u> ABS Estimated Resident Population, available from National, state and territory population published on https://www.abs.gov.au/statistics/people/population/national-state-and-territory-population/latest-release
Frequency of data source collection	<u>Numerator:</u> Annual <u>Denominator:</u> Annual

PI 2 Aboriginal and Torres Strait Islander children

Indigenous status	
Description	The proportion of Aboriginal and Torres Strait Islander children aged 4 and 5 years as at 1 July of the collection year, who are enrolled in the year before full-time schooling in quality early childhood education programs.
Numerator	The number of Aboriginal and Torres Strait Islander children aged 4 and 5 years as at 1 July of the collection year, who are enrolled in the year before full-time schooling in quality early childhood education programs.
Numerator data elements	<p><u>Child/Person URL data elements:</u></p> <ul style="list-style-type: none"> • Early childhood education program enrolment indicator (METeOR Id 602301) • Date of birth (METeOR Id 287007) • Indigenous status (METeOR Id 602543)
Denominator	Estimated number of Aboriginal and Torres Strait Islander children aged 4 years.
Denominator data elements	<p><u>Child/Person URL data elements:</u></p> <ul style="list-style-type: none"> • Estimates and Projections, Aboriginal and Torres Strait Islander Australians, 2006 to 2031
Computation	<p>Numerator ÷ Denominator X 100 = Proportion</p> <p>Refer to flow chart PI 2: Proportion of children enrolled in the year before full-time school in quality early childhood education programs</p>
Presentation	Proportion
Calculation rules	<p>This performance indicator requires child level data. For instructions on creating unique child records from child episode data, including how to treat multiple enrolments and repeat enrolments over time, see Appendix A: 'Creating unique child records from episode records'. If children are enrolled in multiple services, they should be counted in the numerator/denominator if they meet the criteria in at least one service.</p> <p>Age is calculated for children using their date of birth, referenced to their age at 1 July of the collection year.</p> <p><u>Numerator:</u></p> <p>The numerator is obtained by summing all children aged 4 and 5 years who are reported as Aboriginal and/or Torres Strait Islander and have a 'Yes' response against the child level data element 'Early childhood education program enrolment indicator' (representing enrolment in the year before full-time schooling).</p> <p><u>Denominator:</u></p> <p>To be based on the population projections for Aboriginal and Torres Strait Islander 4 year olds from the latest published data.</p>
Identifiers	<p>Person ID (SLK 581):</p> <p>The SLK will provide a unique identifier for the vast majority of children. For the small percentage that may have the same SLK, legitimate duplicates can be identified by jurisdictions by using a child/student database to check the name, date of birth, sex and address details of each child with an identical SLK.</p> <p>Matching SLKs should be identified appropriately. See Appendix A: 'Creating unique child records from episode records'.</p>
Identifier data elements	<p><u>Child/Person URL data elements:</u></p> <ul style="list-style-type: none"> • Statistical linkage key 581 (METeOR Id 349895)
Data collection details	
Data source(s)	<u>Numerator:</u> NECECC

	<u>Denominator</u> : Estimates and Projections, Aboriginal and Torres Strait Islander Australians, 2006 to 2031 https://www.abs.gov.au/statistics/people/aboriginal-and-torres-strait-islander-peoples/estimates-and-projections-aboriginal-and-torres-strait-islander-australians/2006-2031
Frequency of data source collection	<u>Numerator</u> : Annual <u>Denominator</u> : Annual intercensal estimates; Aboriginal and Torres Strait Islander population projections

PI 3 Disadvantaged children¹

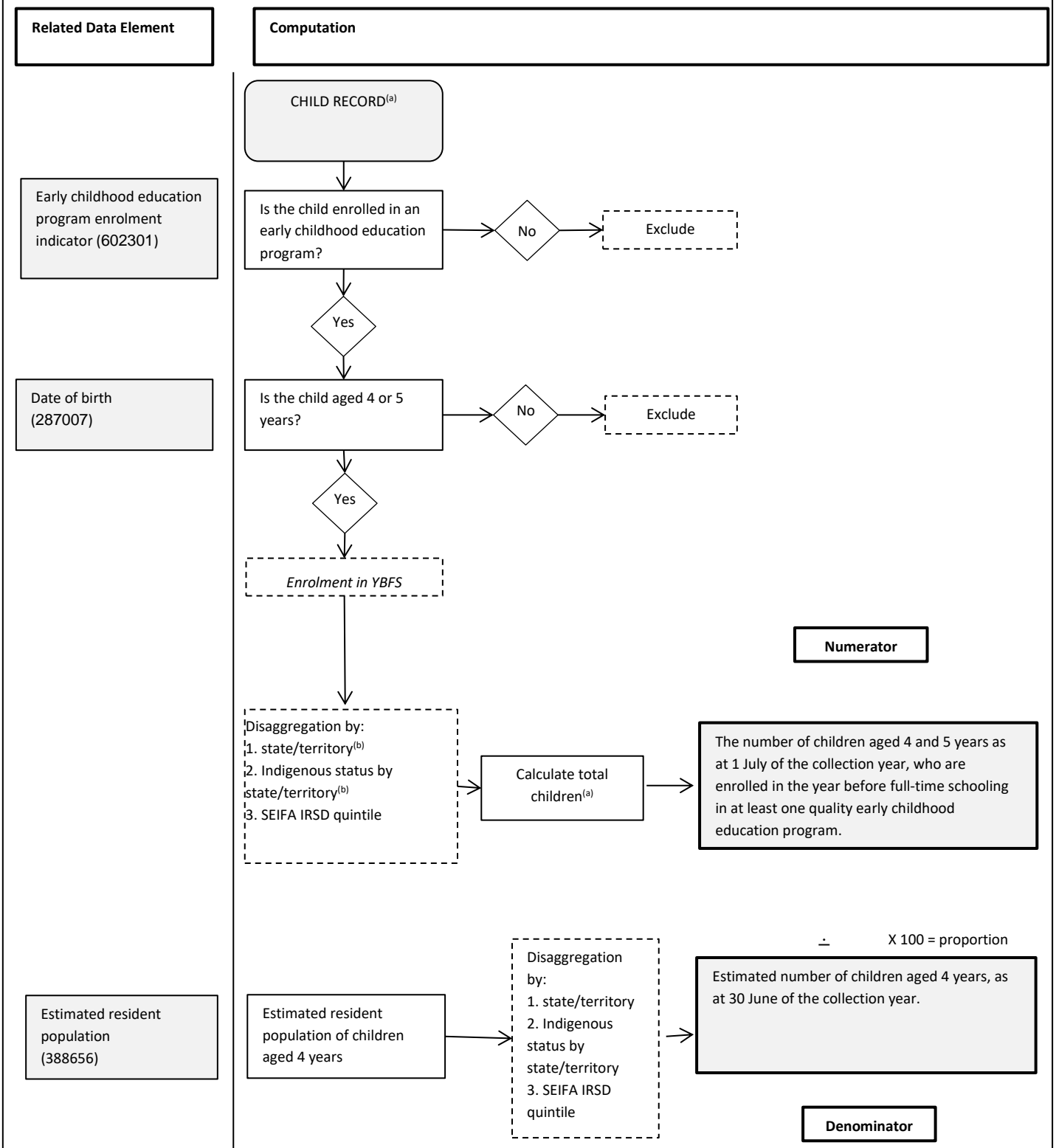
Children experiencing disadvantage	
Description	The proportion of children aged 4 and 5 years as at 1 July of the collection year, who reside in disadvantaged areas and are enrolled in the year before full-time schooling in quality early childhood education programs.
Numerator	The number of children aged 4 and 5 years as at 1 July of the collection year, who reside in disadvantaged areas and are enrolled in the year before full-time schooling in quality early childhood education programs.
Numerator data elements	<p><u>Child/Person URL data elements:</u></p> <ul style="list-style-type: none"> • Early childhood education program enrolment indicator (METeOR Id 602301) • Date of birth (METeOR Id 287007) • SEIFA (2016 Census, ASGS 2016) cluster (METeOR Id 695778) <ul style="list-style-type: none"> • Address—Statistical Area level 1 (SA1) code (ASGS 2016) (METeOR Id 660637)
Denominator	Estimated number of children aged 4 years who reside in disadvantaged areas, as at 30 June of the collection year.
Denominator data elements	<p><u>Child/Person URL data elements:</u></p> <ul style="list-style-type: none"> • Estimated Resident Population (ERP) of children aged 4 by SEIFA IRSD, by state/territory (METeOR Id 388656)
Computation	<p>Numerator ÷ Denominator X 100 = Proportion</p> <p>Refer to flow chart PI 2: Proportion of children enrolled in the year before full-time school in quality early childhood education programs</p>
Presentation	Proportion
Calculation rules	<p>This performance indicator requires child level data. For instructions on creating unique child records from child episode data, including how to treat multiple enrolments and repeat enrolments over time, see Appendix A: 'Creating unique child records from episode records'. If children are enrolled in multiple services, they should be counted in the numerator/denominator if they meet the criteria in at least one service.</p> <p>Age is calculated for children using their date of birth, referenced to their age at 1 July of the collection year.</p> <p><u>Numerator:</u> The numerator is obtained by summing all children aged 4 or 5 years who reside in areas with a SEIFA IRSD quintile of 1 (based on Statistical Area 1, SA1²) and who have a 'Yes' response against the child level data element 'Early childhood education program enrolment indicator' (representing enrolment in the year before full-time schooling).</p> <p><u>Denominator:</u> To be based on the 2016 Census-based ERP by SEIFA IRSD for 4 year olds from 2017 onwards.</p>

¹ There is currently no nationally agreed definition of 'disadvantaged children' under the Agreement–2022. The performance indicators use SEIFA IRSD, which is a nationally consistent measure of disadvantage available from the NECECC. States and territories may use different measures in their individual Implementation Plans as agreed bilaterally with the Commonwealth.

² Subject to availability, SEIFA quintiles may be based on state/territory rankings rather than rankings for Australia. This reflects that advantage is a relative rather than absolute characteristic.

Notes and Exceptions	<p>Disadvantage is measured using the ABS Index of Relative Socio-economic Disadvantage (IRSD) derived from the 2016 ABS Census of Population and Housing. IRSD is a general socio-economic index that summarises a range of information about the economic and social resources of people and households within an area. Census variables that comprise this index include low income, no qualifications, low educational attainment, unemployment, overcrowded housing, disability, dwellings without motor vehicles, and Indigenous status. See the ABS website for more information (Census of Population and Housing: Socio-Economic Indexes for Areas (SEIFA), Australia, 2016, ABS cat. no. 2033.0.55.001 https://www.abs.gov.au/ausstats/abs@.nsf/Lookup/by%20Subject/2033.0.55.001~2016~Main%20Features~IRSD~19). The use of SEIFA IRSD to measure disadvantage for this performance indicator may be reviewed pending national agreement on a definition of children experiencing disadvantage.</p>
Identifiers	<p><u>Person ID (SLK 581):</u> The SLK will provide a unique identifier for the vast majority of children. For the small percentage that may have the same SLK, legitimate duplicates can be identified by jurisdictions by using a child/student database to check the name, date of birth, sex and address details of each child with an identical SLK. Matching SLKs should be identified appropriately. See Appendix A: 'Creating unique child records from episode records'.</p>
Identifier data elements	<p><u>Child/Person URL data elements:</u></p> <ul style="list-style-type: none"> • Statistical linkage key 581 (METeOR Id 349895)
Data collection details	
Data source(s)	<p><u>Numerator:</u> NECECC <u>Denominator:</u> ABS Estimated Resident Population, available from National, state and territory population published on https://www.abs.gov.au/statistics/people/population/national-state-and-territory-population/latest-release</p>
Frequency of data source collection	<p><u>Numerator:</u> Annual <u>Denominator:</u> Annual</p>

PI 1-3 PROPORTION OF CHILDREN ENROLLED IN THE YEAR BEFORE FULL-TIME SCHOOL IN QUALITY EARLY CHILDHOOD EDUCATION PROGRAM(S)



(a) Refer to Appendix A for instructions on creating unique child records from episode records.
 (b) The location where the early childhood education program was delivered.

Note: refer to Appendix B for details on the inclusion and exclusion of response categories in the computation.

Proportion of enrolled children, enrolled in the year before full-time school, in quality early childhood education program(s) for 600 hours per year (Performance Indicator 4-6)

PI 4 All children

Indicator details	
Description	The proportion of enrolled children aged 4 and 5 years as at 1 July of the collection year, who are enrolled in the year before full-time schooling in a quality early childhood education program(s) for 600 hours per year.
Numerator	The number of children aged 4 and 5 years as at 1 July of the collection year, who are enrolled in the year before full-time schooling in one or more quality early childhood education program(s) for a total of 600 hours or more in the collection year.
Numerator data elements	<p><u>Child/Person URL data elements:</u></p> <ul style="list-style-type: none"> • Early childhood education program enrolment indicator (METeOR Id 602301) • Date of birth (METeOR Id 287007) • Early childhood education program hours enrolled (per week) (METeOR Id 602310) <p><u>Service provider organisation URL data elements:</u></p> <ul style="list-style-type: none"> • Number of early childhood education program service operation weeks (METeOR Id 602358)
Denominator	The number of children aged 4 and 5 years as at 1 July of the collection year, who are enrolled in the year before full-time schooling in one or more quality early childhood education program(s).
Denominator data elements	<p><u>Child/Person URL data elements:</u></p> <ul style="list-style-type: none"> • Early childhood education program enrolment indicator (METeOR Id 602301) • Date of birth (METeOR Id 287007)
Computation	<p>Numerator ÷ Denominator X 100 = Proportion</p> <p>Refer to flow chart PI 3: Proportion of enrolled children, enrolled in the year before full-time school, in quality early childhood education program(s) for 600 hours per year</p>
Presentation	Proportion
Calculation rules	<p>This performance indicator requires child level data. For instructions on creating unique child records from child episode data, including how to treat multiple enrolments and repeat enrolments over time, see Appendix A: 'Creating unique child records from episode records'.</p> <p>Enrolment in a program(s) for a total of 600 hours or more per year is determined by multiplying 'Early childhood education program hours enrolled (per week)' by the 'Number of early childhood education program service operation weeks' to gain a figure above or below 600 hours per year. Where a child is enrolled across multiple service providers, the calculation will be the sum of (hours enrolled at each service multiplied by the service operation weeks for that service).</p> <p>Age is calculated for children using their date of birth, referenced to their age at 1 July of the collection year.</p> <p><u>Numerator:</u></p>

	<p>The numerator is obtained by summing all children aged 4 or 5 years who have a 'Yes' response against the child level data element 'Early childhood education program enrolment indicator' (representing enrolment in the year before full-time schooling), and who are enrolled in a program(s) for a total of 600 hours or more per year.</p> <p><u>Denominator:</u> The denominator is obtained by summing all children aged 4 or 5 years who have a 'Yes' against the child level data element 'Early childhood education program enrolment indicator' (representing enrolment in the year before full-time schooling).</p>
Identifiers	<p>Person ID (SLK 581):</p> <p>The SLK will provide a unique identifier for the vast majority of children. For the small percentage that may have the same SLK, legitimate duplicates can be identified by jurisdictions by using a child/student database to check the name, date of birth, sex and address details of each child with an identical SLK.</p> <p>Matching SLKs should be identified appropriately. See Appendix A: 'Creating unique child records from episode records'.</p>
Identifier data elements	<p><u>Child/Person URL data elements:</u></p> <ul style="list-style-type: none"> • Statistical linkage key 581 (METeOR Id 349895)
Data collection details	
Data source(s)	<p><u>Numerator:</u> NECECC</p> <p><u>Denominator:</u> NECECC</p>
Frequency of data source collection	<p><u>Numerator:</u> Annual</p> <p><u>Denominator:</u> Annual</p>

PI 5 Aboriginal and Torres Strait Islander children

Indicator details	
Description	The proportion of Aboriginal and Torres Strait Islander children aged 4 and 5 years as at 1 July of the collection year, who are enrolled in the year before full-time schooling in a quality early childhood education program(s) for 600 hours per year.
Numerator	The number of Aboriginal and Torres Strait Islander children aged 4 and 5 years as at 1 July of the collection year, who are enrolled in the year before full-time schooling in one or more quality early childhood education program(s) for a total of 600 hours or more in the collection year.
Numerator data elements	<p><u>Child/Person URL data elements:</u></p> <ul style="list-style-type: none"> • Early childhood education program enrolment indicator (METeOR Id 602301) • Date of birth (METeOR Id 287007) • Early childhood education program hours enrolled (per week) (METeOR Id 602310) • Indigenous status (METeOR Id 615458) <p><u>Service provider organisation URL data elements:</u></p> <ul style="list-style-type: none"> • Number of early childhood education program service operation weeks (METeOR Id 602358)
Denominator	The number of Aboriginal and Torres Strait Islander children aged 4 and 5 years as at 1 July of the collection year, who are enrolled in the year before full-time schooling in one or more quality early childhood education program(s).
Denominator data elements	<p><u>Child/Person URL data elements:</u></p> <ul style="list-style-type: none"> • Early childhood education program enrolment indicator (METeOR Id 602301) • Date of birth (METeOR Id 287007) • Indigenous status (METeOR Id 615458)
Computation	<p>Numerator ÷ Denominator X 100 = Proportion</p> <p>Refer to flow chart PI 3: Proportion of enrolled children, enrolled in the year before full-time school, in quality early childhood education program(s) for 600 hours per year</p>
Presentation	Proportion
Calculation rules	<p>This performance indicator requires child level data. For instructions on creating unique child records from child episode data, including how to treat multiple enrolments and repeat enrolments over time, see Appendix A: 'Creating unique child records from episode records'.</p> <p>Enrolment in a program(s) for a total of 600 hours or more per year is determined by multiplying 'Early childhood education program hours enrolled (per week)' by the 'Number of early childhood education program service operation weeks' to gain a figure above or below 600 hours per year. Where a child is enrolled across multiple service providers, the calculation will be the sum of (hours enrolled at each service multiplied by the service operation weeks for that service).</p> <p>Age is calculated for children using their date of birth, referenced to their age at 1 July of the collection year.</p>

	<p><u>Numerator:</u> The numerator is obtained by summing all children aged 4 or 5 years who are reported as Aboriginal and/or Torres Strait Islander and have a 'Yes' response against the child level data element 'Early childhood education program enrolment indicator' (representing enrolment in the year before full-time schooling), and who are enrolled in a program for a total of 600 hours or more per year.</p> <p><u>Denominator:</u> The denominator is obtained by summing all children aged 4 or 5 years who are reported as Aboriginal and/or Torres Strait Islander and have a 'Yes' response against the child level data element 'Early childhood education program enrolment indicator' (representing enrolment in the year before full-time schooling).</p>
Identifiers	<p>Person ID (SLK 581): The SLK will provide a unique identifier for the vast majority of children. For the small percentage that may have the same SLK, legitimate duplicates can be identified by jurisdictions by using a child/student database to check the name, date of birth, sex and address details of each child with an identical SLK. Matching SLKs should be identified appropriately. See Appendix A: 'Creating unique child records from episode records'.</p>
Identifier data elements	<p><u>Child/Person URL data elements:</u></p> <ul style="list-style-type: none"> • Statistical linkage key 581 (METeOR Id 349895)
Data collection details	
Data source(s)	<p><u>Numerator:</u> NECECC <u>Denominator:</u> NECECC</p>
Frequency of data source collection	<p><u>Numerator:</u> Annual <u>Denominator:</u> Annual</p>

PI 6 Disadvantaged children³

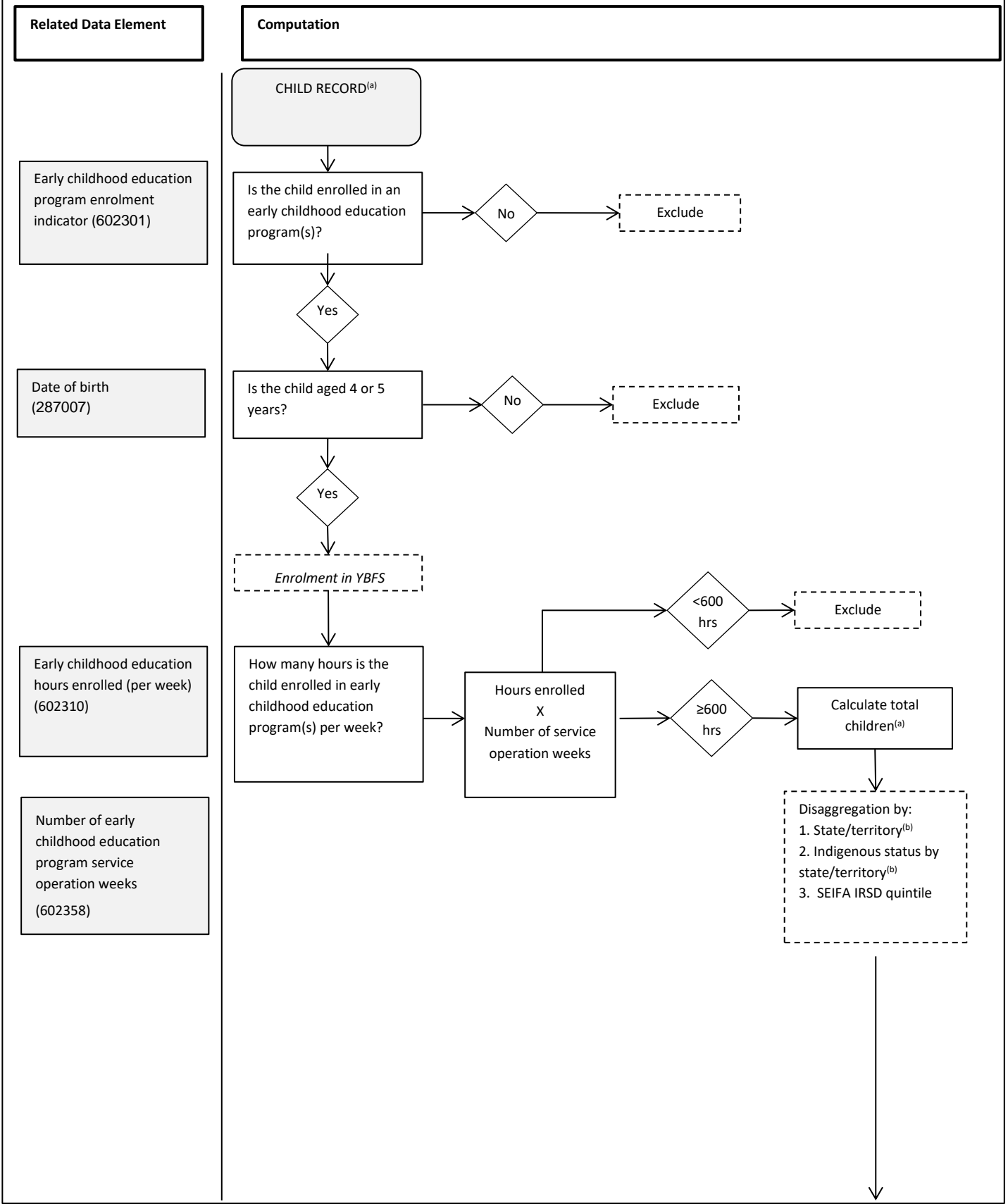
Indicator details	
Description	The proportion of children aged 4 and 5 years as at 1 July of the collection year, who reside in disadvantaged areas and are enrolled in the year before full-time schooling in a quality early childhood education program(s) for 600 hours per year.
Numerator	The number of children aged 4 and 5 years as at 1 July of the collection year, who reside in disadvantaged areas and are enrolled in the year before full-time schooling in one or more quality early childhood education program(s) for a total of 600 hours or more in the collection year.
Numerator data elements	<p><u>Child/Person URL data elements:</u></p> <ul style="list-style-type: none"> • Early childhood education program enrolment indicator (METeOR Id 602301) • Date of birth (METeOR Id 287007) • Early childhood education program hours enrolled (per week) (METeOR Id 602310) • SEIFA (2016 Census, ASGS 2016) cluster (METeOR Id 695778) <ul style="list-style-type: none"> • Address—Statistical Area level 1 (SA1) code (ASGS 2016) (METeOR Id 660637) <p><u>Service provider organisation URL data elements:</u></p> <ul style="list-style-type: none"> • Number of early childhood education program service operation weeks (METeOR Id 602358)
Denominator	The number of children aged 4 and 5 years as at 1 July of the collection year, who reside in disadvantaged areas and who are enrolled in the year before full-time schooling in one or more quality early childhood education program(s).
Denominator data elements	<p><u>Child/Person URL data elements:</u></p> <ul style="list-style-type: none"> • Early childhood education program enrolment indicator (METeOR Id 602301) • Date of birth (METeOR Id 287007) • SEIFA (2016 Census, ASGS 2016) cluster (METeOR Id 695778) <ul style="list-style-type: none"> • Address—Statistical Area level 1 (SA1) code (ASGS 2016) (METeOR Id 660637)
Computation	<p>Numerator ÷ Denominator X 100 = Proportion</p> <p>Refer to flow chart PI 3: Proportion of enrolled children, enrolled in the year before full-time school, in quality early childhood education program(s) for 600 hours per year</p>
Presentation	Proportion
Calculation rules	<p>This performance indicator requires child level data. For instructions on creating unique child records from child episode data, including how to treat multiple enrolments and repeat enrolments over time, see Appendix A: 'Creating unique child records from episode records'.</p> <p>Enrolment in a program(s) for a total of 600 hours or more per year is determined by multiplying 'Early childhood education program hours enrolled (per week)' by the 'Number of early childhood education program service operation weeks' to gain a figure above or below 600 hours per year. Where a child is enrolled across multiple service providers, the calculation will be the sum of (hours enrolled at each service multiplied by the service operation weeks for that service).</p>

³ There is currently no nationally agreed definition of 'disadvantaged children' under the Agreement–2022. The performance indicators use SEIFA IRSD, which is a nationally consistent measure of disadvantage available from the NECECC. States and territories may use different measures in their individual Implementation Plans as agreed bilaterally with the Commonwealth.

	<p>Age is calculated for children using their date of birth, referenced to their age at 1 July of the collection year.</p> <p>Numerator:</p> <p>The numerator is obtained by summing all children aged 4 or 5 years who reside in areas with a SEIFA IRSD quintile of 1 (based on Statistical Area 1, SA1⁴) and who have a 'Yes' response against the child level data element 'Early childhood education program enrolment indicator' (representing enrolment in the year before full-time schooling), and who are enrolled in a program(s) for a total of 600 hours or more per year.</p> <p>Denominator:</p> <p>The denominator is obtained by summing all children aged 4 or 5 years who reside in areas with a SEIFA IRSD quintile of 1 (based on Statistical Area 1, SA1) and who have a 'Yes' response against the child level data element 'Early childhood education program enrolment indicator' (representing enrolment in the year before full-time schooling).</p>
Notes and Exceptions	<p>Disadvantage is measured using the ABS Index of Relative Socio-economic Disadvantage (IRSD) derived from the 2016 ABS Census of Population and Housing. IRSD is a general socio-economic index that summarises a range of information about the economic and social resources of people and households within an area. Census variables that comprise this index include low income, no qualifications, low educational attainment, unemployment, overcrowded housing, disability, dwellings without motor vehicles, and Indigenous status. See the ABS website for more information (Census of Population and Housing: Socio-Economic Indexes for Areas (SEIFA), Australia, 2016, ABS cat. no. 2033.0.55.001 https://www.abs.gov.au/ausstats/abs@.nsf/Lookup/by%20Subject/2033.0.55.001~2016~Main%20Features~IRSD~19). The use of SEIFA IRSD to measure disadvantage for this performance indicator may be reviewed pending national agreement on a definition of children experiencing disadvantage.</p>
Identifiers	<p>Person ID (SLK 581):</p> <p>The SLK will provide a unique identifier for the vast majority of children. For the small percentage that may have the same SLK, legitimate duplicates can be identified by jurisdictions by using a child/student database to check the name, date of birth, sex and address details of each child with an identical SLK.</p> <p>Matching SLKs should be identified appropriately. See Appendix A: 'Creating unique child records from episode records'.</p>
Identifier data elements	<p><u>Child/Person URL data elements:</u></p> <ul style="list-style-type: none"> Statistical linkage key 581 (METeOR Id 349895)
Data collection details	
Data source(s)	<p><u>Numerator:</u> NECECC</p> <p><u>Denominator:</u> NECECC</p>
Frequency of data source collection	<p><u>Numerator:</u> Annual</p> <p><u>Denominator:</u> Annual</p>

⁴ Subject to availability, SEIFA quintiles may be based on state/territory rankings rather than rankings for Australia.

PI 4-6 PROPORTION OF ENROLLED CHILDREN, ENROLLED IN THE YEAR BEFORE FULL-TIME SCHOOL, IN QUALITY EARLY CHILDHOOD EDUCATION PROGRAM(S) FOR 600 HOURS PER YEAR



Numerator



The number of children aged 4 and 5 years as at 1 July of the collection year, who are enrolled in the year before full-time schooling in one or more quality early childhood education program(s) for a total of 600 hours or more in the collection year.

÷ X 100 = proportion

The number of children aged 4 and 5 years as at 1 July of the collection year, who are enrolled in the year before full-time schooling in one or more quality early childhood education program(s).

Denominator

- (a) Refer to Appendix A for instructions on creating unique child records from episode records.
- (b) The location where the early childhood education program was delivered.

Note: Refer to Appendix B for details on the inclusion and exclusion of response categories in the computation.

Proportion of enrolled children who attend, in the year before full-time school, quality early childhood education program(s) for 600 hours per year (non-payment performance indicator)

All children

Indicator details	
Description	The proportion of enrolled children aged 4 and 5 years as at 1 July of the collection year, who are attending in the year before full-time schooling a quality early childhood education program(s) for 600 hours per year.
Numerator	The number of children aged 4 and 5 years as at 1 July of the collection year, who are attending in the year before full-time schooling one or more quality early childhood education program(s) for a total of 600 hours or more in the collection year.
Numerator data elements	<p><u>Child/Person URL data elements:</u></p> <ul style="list-style-type: none"> • Early childhood education program attendance indicator (METeOR Id 602298) • Date of birth (METeOR Id 287007) • Early childhood education hours attended (per week) (METeOR Id 602308) <p><u>Service provider organisation URL data elements:</u></p> <ul style="list-style-type: none"> • Number of early childhood education program service operation weeks (METeOR Id 602358)
Denominator	The number of children aged 4 and 5 years as at 1 July of the collection year, who are enrolled in the year before full-time schooling in one or more quality early childhood education program(s), for a total of 600 hours or more in the collection year.
Denominator data elements	<p><u>Child/Person URL data elements:</u></p> <ul style="list-style-type: none"> • Early childhood education program enrolment indicator (METeOR Id 602301) • Date of birth (METeOR Id 287007) • Early childhood education program hours enrolled (per week) (METeOR Id 602310) <p><u>Service provider organisation URL data elements:</u></p> <ul style="list-style-type: none"> • Number of early childhood education program service operation weeks (METeOR Id 602358)
Computation	<p>Numerator ÷ Denominator X 100 = Proportion</p> <p>Refer to flow chart PI 4: Proportion of enrolled children who attend, in the year before full-time school, quality early childhood education program(s) for 600 hours per year</p>
Presentation	Proportion
Calculation rules	This performance indicator requires child level data. For instructions on creating unique child records from child episode data, including how to treat multiple enrolments and repeat enrolments over time, see Appendix A: 'Creating unique child records from episode records'.

	<p>Attendance at a program(s) for a total of 600 hours or more per year is determined by multiplying 'Early childhood education program hours attended (per week)' by the 'Number of early childhood education program service operation weeks' to gain a figure above or below 600 hours per year. Where a child is attending across multiple service providers, the calculation will be the sum of (hours attended at each service multiplied by the service operation weeks for that service).</p> <p>Age is calculated for children using their date of birth, referenced to their age at 1 July of the collection year.</p> <p><u>Numerator:</u></p> <p>The numerator is obtained by summing all children aged 4 or 5 years who have a 'Yes' response against the child level data element 'Early childhood education program attendance indicator' (representing attendance in the year before full-time schooling), and who attend a program(s) for a total of 600 hours or more per year.</p> <p><u>Denominator:</u></p> <p>The denominator is obtained by summing all children aged 4 or 5 years who have a 'Yes' response against the child level data element 'Early childhood education program enrolment indicator' (representing enrolment in the year before full-time schooling), and who are enrolled in a program(s) for a total of 600 hours or more per year.</p>
Identifiers	<p>Person ID (SLK 581):</p> <p>The SLK will provide a unique identifier for the vast majority of children. For the small percentage that may have the same SLK, legitimate duplicates can be identified by jurisdictions by using a child/student database to check the name, date of birth, sex and address details of each child with an identical SLK.</p> <p>Matching SLKs should be identified appropriately. See Appendix A: 'Creating unique child records from episode records'.</p>
Identifier data elements	<p><u>Child/Person URL data elements:</u></p> <ul style="list-style-type: none"> Statistical linkage key 581 (METeOR Id 349895)
Data collection details	
Data source(s)	<p><u>Numerator:</u> NECECC</p> <p><u>Denominator:</u> NECECC</p>
Frequency of data source collection	<p><u>Numerator:</u> Annual</p> <p><u>Denominator:</u> Annual</p>

Aboriginal and Torres Strait Islander children

Indicator details	
Description	The proportion of Aboriginal and Torres Strait Islander enrolled children aged 4 and 5 years as at 1 July of the collection year, who are attending in the year before full-time schooling a quality early childhood education program(s) for 600 hours per year.
Numerator	The number of Aboriginal and Torres Strait Islander children aged 4 and 5 years as at 1 July of the collection year, who are attending in the year before full-time schooling one or more quality early childhood education program(s), for a total of 600 hours or more in the collection year.
Numerator data elements	<p><u>Child/Person URL data elements:</u></p> <ul style="list-style-type: none"> • Early childhood education program attendance indicator (METeOR Id 602298) • Date of birth (METeOR Id 287007) • Early childhood education hours attended (per week) (METeOR Id 602308) • Indigenous status (METeOR Id 615458) <p><u>Service provider organisation URL data elements:</u></p> <ul style="list-style-type: none"> • Number of early childhood education program service operation weeks (METeOR Id 602358)
Denominator	The number of Aboriginal and Torres Strait Islander children aged 4 and 5 years as at 1 July of the collection year, who are enrolled in the year before full-time schooling in one or more quality early childhood education program(s), for a total of 600 hours or more in the collection year.
Denominator data elements	<p><u>Child/Person URL data elements:</u></p> <ul style="list-style-type: none"> • Early childhood education program enrolment indicator (METeOR Id 602301) • Date of birth (METeOR Id 287007) • Early childhood education hours enrolled (per week) (METeOR Id 602310) • Indigenous status (METeOR Id 615458) <p><u>Service provider organisation URL data elements:</u></p> <ul style="list-style-type: none"> • Number of early childhood education program service operation weeks (METeOR Id 602358)
Computation	<p>Numerator ÷ Denominator X 100 = Proportion</p> <p>Refer to flow chart PI 4: Proportion of enrolled children who attend, in the year before full-time school, quality early childhood education program(s) for 600 hours per year</p>
Presentation	Proportion
Calculation rules	<p>This performance indicator requires child level data. For instructions on creating unique child records from child episode data, including how to treat multiple enrolments and repeat enrolments over time, see Appendix A: 'Creating unique child records from episode records'.</p> <p>Attendance at a program(s) for a total of 600 hours or more per year is determined by multiplying 'Early childhood education hours attended (per week)' by the 'Number of early childhood education program service operation weeks' to gain a figure above or below 600 hours per year. Where a child is attending across multiple service providers, the calculation will be the sum of (hours attended at each service multiplied by the service operation weeks for that service).</p> <p>Age is calculated for children using their date of birth, referenced to their age at 1 July of the collection year.</p>

	<p><u>Numerator:</u> The numerator is obtained by summing all children aged 4 or 5 years who are reported as Aboriginal and/or Torres Strait Islander and have a 'Yes' response against the child level data element 'Early childhood education program attendance indicator' (representing attendance in the year before full-time schooling), and who attend a program(s) for a total of 600 hours or more per year.</p> <p><u>Denominator:</u> The denominator is obtained by summing all children aged 4 or 5 years who are reported as Aboriginal and/or Torres Strait Islander and have a 'Yes' response against the child level data element 'Early childhood education program enrolment indicator' (representing enrolment in the year before full-time schooling), and who are enrolled in a program(s) for a total of 600 hours or more per year.</p>
Identifiers	<p>Person ID (SLK 581): The SLK will provide a unique identifier for the vast majority of children. For the small percentage that may have the same SLK, legitimate duplicates can be identified by jurisdictions by using a child/student database to check the name, date of birth, sex and address details of each child with an identical SLK. Matching SLKs should be identified appropriately. See Appendix A: 'Creating unique child records from episode records'.</p>
Identifier data elements	<p><u>Child/Person URL data elements:</u></p> <ul style="list-style-type: none"> • Statistical linkage key 581 (METeOR Id 349895)
Data collection details	
Data source(s)	<p><u>Numerator:</u> NECECC <u>Denominator:</u> NECECC</p>
Frequency of data source collection	<p><u>Numerator:</u> Annual <u>Denominator:</u> Annual</p>

Disadvantaged children⁵

Indicator details	
Description	The proportion of enrolled children aged 4 and 5 years as at 1 July of the collection year, who reside in disadvantaged areas and are attending in the year before full-time schooling a quality early childhood education program(s) for 600 hours per year.
Numerator	The number of children aged 4 and 5 years as at 1 July of the collection year, who reside in disadvantaged areas and are attending in the year before full-time schooling one or more quality early childhood education program(s), for a total of 600 hours or more in the collection year.
Numerator data elements	<p><u>Child/Person URL data elements:</u></p> <ul style="list-style-type: none"> • Early childhood education program attendance indicator (METeOR Id 602298) • Date of birth (METeOR Id 287007) • Early childhood education hours attended (per week) (METeOR Id 602308) • SEIFA (2016 Census, ASGS 2016) cluster (METeOR Id 695778) <ul style="list-style-type: none"> • Address—Statistical Area level 1 (SA1) code (ASGS 2016) (METeOR Id 660637) <p><u>Service provider organisation URL data elements:</u></p> <ul style="list-style-type: none"> • Number of early childhood education program service operation weeks (METeOR Id 602358)
Denominator	The number of children aged 4 and 5 years as at 1 July of the collection year, who reside in disadvantaged areas and are enrolled in the year before full-time schooling in one or more quality early childhood education program(s), for a total of 600 hours or more in the collection year.
Denominator data elements	<p><u>Child/Person URL data elements:</u></p> <ul style="list-style-type: none"> • Early childhood education program enrolment indicator (METeOR Id 602301) • Date of birth (METeOR Id 287007) • Early childhood education hours enrolled (per week) (METeOR Id 602310) • SEIFA (2016 Census, ASGS 2016) cluster (METeOR Id 695778) <ul style="list-style-type: none"> • Address—Statistical Area level 1 (SA1) code (ASGS 2016) (METeOR Id 660637) <p><u>Service provider organisation URL data elements:</u></p> <ul style="list-style-type: none"> • Number of early childhood education program service operation weeks (METeOR Id 602358)
Computation	<p>Numerator ÷ Denominator X 100 = Proportion</p> <p>Refer to flow chart PI 4: Proportion of enrolled children who attend, in the year before full-time school, quality early childhood education program(s) for 600 hours per year</p>
Presentation	Proportion
Calculation rules	This performance indicator requires child level data. For instructions on creating unique child records from child episode data, including how to treat multiple enrolments and repeat enrolments over time, see Appendix A: 'Creating unique child records from episode records'.

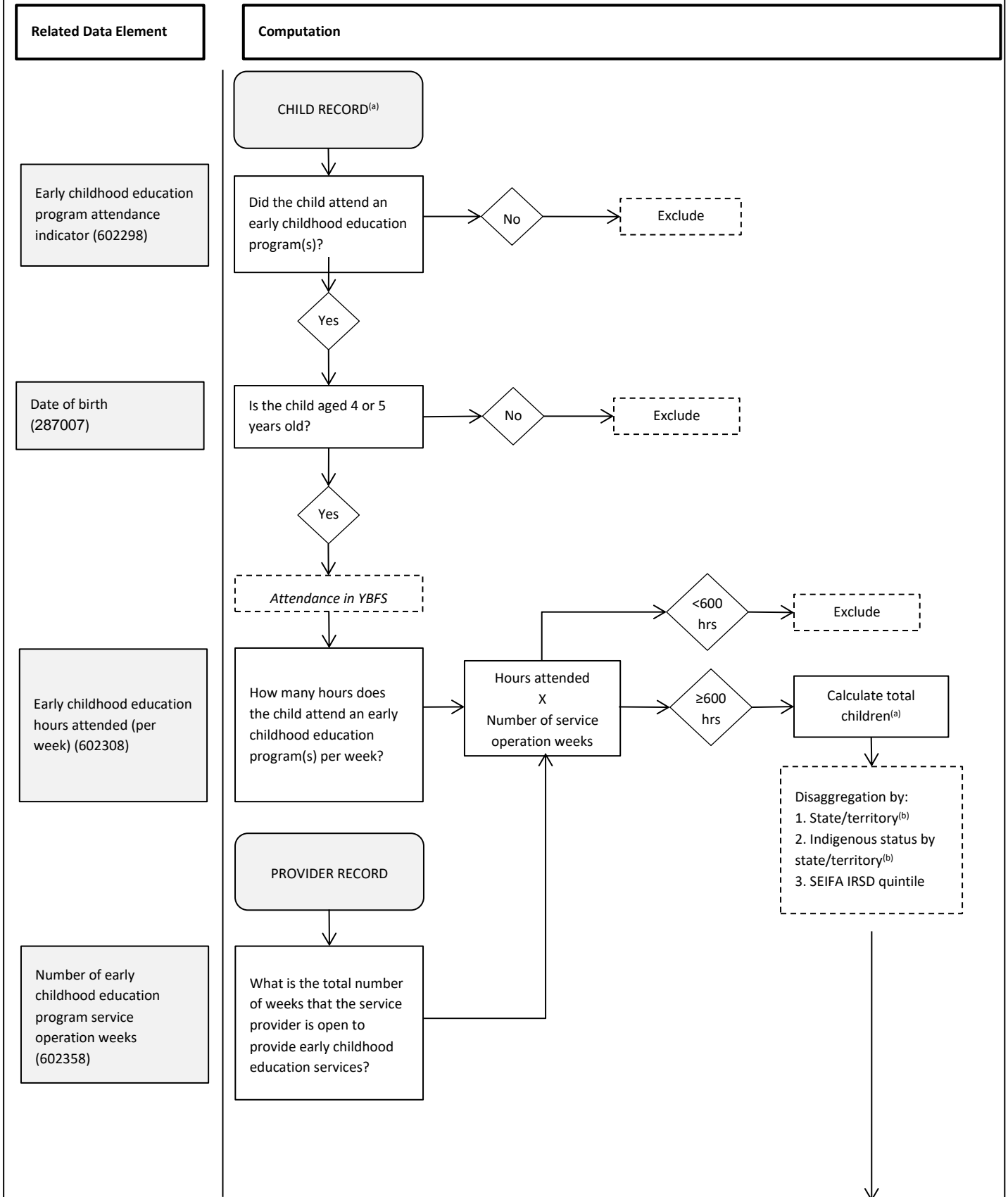
⁵ There is currently no nationally agreed definition of 'disadvantaged children' under the Agreement–2022. The performance indicators use SEIFA IRSD, which is a nationally consistent measure of disadvantage available from the NECECC. States and territories may use different measures in their individual Implementation Plans as agreed bilaterally with the Commonwealth.

	<p>Attendance at a program(s) for a total of 600 hours or more per year is determined by multiplying 'Early childhood education hours attended (per week)' by the 'Number of early childhood education program service operation weeks' to gain a figure above or below 600 hours per year. Where a child is attending across multiple service providers, the calculation will be the sum of (hours attended at each service multiplied by the service operation weeks for that service).</p> <p>Age is calculated for children using their date of birth, referenced to their age at 1 July of the collection year.</p> <p><u>Numerator:</u></p> <p>The numerator is obtained by summing all children aged 4 or 5 years who reside in areas with a SEIFA IRSD quintile of 1 (based on Statistical Area 1, SA1⁶) and who have a 'Yes' response against the child level data element 'Early childhood education program attendance indicator' (representing attendance in the year before full-time schooling), and who attend a program(s) for a total of 600 hours or more per year.</p> <p><u>Denominator:</u></p> <p>The denominator is obtained by summing all children aged 4 or 5 years who reside in areas with a SEIFA IRSD quintile of 1 (based on Statistical Area 1, SA1) and who have a 'Yes' response against the child level data element 'Early childhood education program enrolment indicator' (representing enrolment in the year before full-time schooling), and who are enrolled in a program(s) for a total of 600 hours or more per year.</p>
Notes and Exceptions	<p>Disadvantage is measured using the ABS Index of Relative Socio-economic Disadvantage (IRSD) derived from the 2016 ABS Census of Population and Housing. IRSD is a general socio-economic index that summarises a range of information about the economic and social resources of people and households within an area. Census variables that comprise this index include low income, no qualifications, low educational attainment, unemployment, overcrowded housing, disability, dwellings without motor vehicles, and Indigenous status. See the ABS website for more information (Census of Population and Housing: Socio-Economic Indexes for Areas (SEIFA), Australia, 2016, ABS cat. no. 2033.0.55.001 https://www.abs.gov.au/ausstats/abs@.nsf/Lookup/by%20Subject/2033.0.55.001~2016~Main%20Features~IRSD~19). The use of SEIFA IRSD to measure disadvantage for this performance indicator may be reviewed pending national agreement on a definition of children experiencing disadvantage.</p>
Identifiers	<p>Person ID (SLK 581):</p> <p>The SLK will provide a unique identifier for the vast majority of children. For the small percentage that may have the same SLK, legitimate duplicates can be identified by jurisdictions by using a child/student database to check the name, date of birth, sex and address details of each child with an identical SLK.</p> <p>Matching SLKs should be identified appropriately. See Appendix A: 'Creating unique child records from episode records'.</p>
Identifier data elements	<p><u>Child/Person URL data elements:</u></p> <ul style="list-style-type: none"> Statistical linkage key 581 (METeOR Id 349895)
Data collection details	
Data source(s)	<p><u>Numerator:</u> NECECC</p> <p><u>Denominator:</u> NECECC</p>

⁶ Subject to availability, SEIFA quintiles may be based on state/territory rankings rather than rankings for Australia.

Frequency of data source collection	<u>Numerator:</u> Annual <u>Denominator:</u> Annual

PROPORTION OF ENROLLED CHILDREN WHO ATTEND, IN THE YEAR BEFORE FULL-TIME SCHOOL, QUALITY EARLY CHILDHOOD EDUCATION PROGRAM(S) FOR 600 HOURS PER YEAR



Numerator

The number of children aged 4 and 5 years as at 1 July of the collection year, who are attending in the year before full-time schooling one or more quality early childhood education program(s) for a total of 600 hours or more in the collection year.

÷ X 100 = proportion

The number of children aged 4 and 5 years as at 1 July of the collection year, who are enrolled in the year before full-time schooling in one or more quality early childhood education program(s), for a total of 600 hours or more in the collection year.

Denominator

- (a) Refer to Appendix A for instructions on creating unique child records from episode records.
- (b) The location where the early childhood education program was delivered.

Note: Refer to Appendix B for details on the inclusion and exclusion of response categories in the computation.

Appendix B.1: Creating unique child records from episode records

This appendix summarises, for background purposes only, how unique child records have been created from episode records in the National Early Childhood Education and Care Collection (NECECC). Methods have improved over time in order to maximise the accuracy of this process and may continue to do so.

Linking of records across data sources

The NECECC utilises and combines data from different sources. Within and across the individual data files supplied by data providers, there may be more than one episode record for a single child. These records consequently need to be linked together in order to produce accurate child statistics. The following data elements have been used for linking the multiple data sources:

- Statistical Linkage Key (SLK)
- SLK Match Code
- Geographic location of child's residence

When linking within a file, if two records have the same SLK and the same SLK Match code, then they are considered as belonging to the same child. If the same SLK does not link on the SLK Match code, or no Match code is supplied, they are considered as being separate children.

When linking across files, the SLK and child geography are used to identify records that belong to a single child.

These linking processes occur after the ABS has identified and reconciled/removed duplicate episode records from the different data sources. This reconciliation uses service provider names and address information.

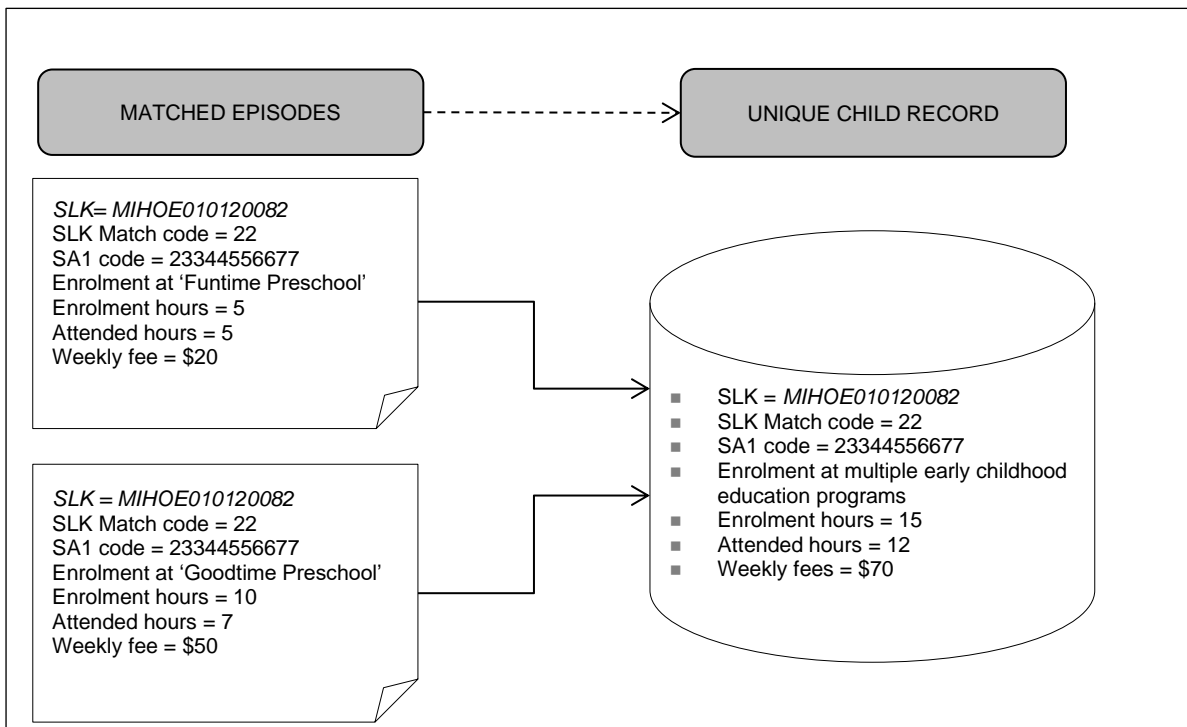
Reporting Child Counts

After completing linking, a data item is created to mark:

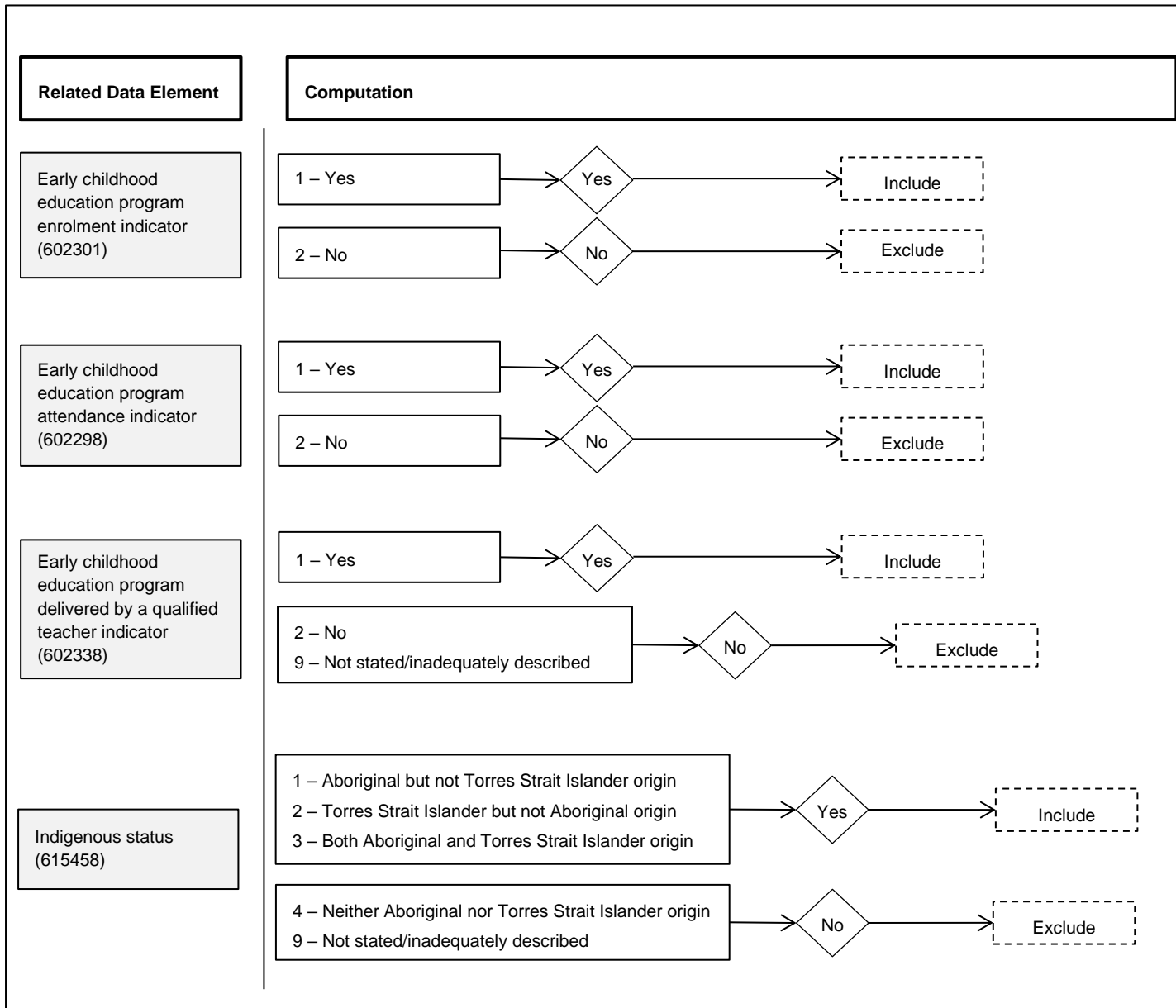
- a child with records solely from a state/territory source
- a child with records solely from a CCSS source
- a child with records from both a state/territory and a CCSS source.

Where two or more child episodes are linked, the unique characteristics within each episode are used to formulate the characteristics of the corresponding unique child record. Figure A.1 provides an example of how the child level data items are produced from episode level information (eg total hours enrolled is calculated from the child's individual episodes).

Figure A.1: Child episode record to unique child record



Appendix B.2: Values for inclusion in PI calculations



List of PI flow charts

Proportion of early childhood education programs delivered by a qualified early childhood teacher	7
PI 1-3 Proportion of children enrolled in the year before full-time school in quality early childhood education program(s)	14
PI 4-6 Proportion of enrolled children, enrolled in the year before full-time school, in quality early childhood education program(s) for 600 hours per year.....	21
Proportion of enrolled children who attend, in the year before full-time school, quality early childhood education program(s) for 600 hours per year.....	30

List of figures

Figure A.1: Child episode record to unique child record	33
---	----

References

ABS (Australian Bureau of Statistics) 2015. Preschool education, Australia 2020. [Preschool Education, Australia, 2020 | Australian Bureau of Statistics \(abs.gov.au\)](#)

ABS (Australian Bureau of Statistics) 2015. Preschool education, Australia 2020: methodology. <https://www.abs.gov.au/methodologies/preschool-education-australia-methodology/2020>

ABS 2014a. National Early Childhood Education and Care Collection: Concepts, sources and methods, 2013. [4240.0.55.001 - National Early Childhood Education and Care Collection: Concepts, Sources and Methods, 2013 \(abs.gov.au\)](#)

AIHW (Australian Institute of Health and Welfare) 2020. Early Childhood Education and Care Data Set Specification. [Early Childhood Education and Care: Unit Record Level NMDS 2021 \(aihw.gov.au\)](#)