

# Appendix B – Performance Indicator Specifications (2024 – 2025)

## Preschool Reform Agreement

Appendix B - Performance Indicator Specifications will be updated as required over the course of the Preschool Reform Agreement. This version of the Specifications only applies to performance indicators for the 2024 and 2025 program years.

# Contents

- Acknowledgments..... 3
- Abbreviations ..... 3
- Introduction ..... 4
  - National Early Childhood Education and Care Collection (NECECC)..... 4
  - Early Childhood Education and Care National Minimum Data Set (ECEC NMDS)..... 5
  - Definitions ..... 5
    - Qualified early childhood teacher ..... 5
    - Early childhood education program/ Preschool program ..... 5
    - Child-specific year before full-time school (CSYBFS)..... 6
    - Year before full-time school (YBFS) population ..... 6
- Performance Indicator 1 – All Children Attending ..... 7
- Performance Indicator 2.1 Aboriginal and Torres Strait Islander Children Enrolled ..... 12
- Performance Indicator 2.2 Aboriginal and Torres Strait Islander Children Attending ..... 16
- Performance Indicator 3.1 Disadvantaged Children Enrolled ..... 21
- Performance Indicator 3.2 Disadvantaged Children Attending ..... 25
- Flowchart 1: Episode to child process flow, and calculation of child level attendance hours ..... 30
- Flowchart 2: Proportion (x%) of children attending a preschool program(s) for y% of 600 hours per year, in the (child-specific) year before full-time school (YBFS)..... 31
- Flowchart 3: Proportion (x%) of children enrolled in a preschool program (or programs) for 600 hours or more in the (child-specific) year before full-time school (YBFS)..... 32
- Appendix B.1: Creating unique child records from episode records ..... 33
  - Linking records across data sources ..... 33
  - Reporting Child Counts ..... 33
- List of flow charts ..... 35
- List of figures ..... 35
- References ..... 35

## Acknowledgments

These Performance Indicator Specifications for the Preschool Reform Agreement have been developed by the Australian Bureau of Statistics (ABS) and Australian Government Department of Education (Department of Education).

## Abbreviations

ABS	Australian Bureau of Statistics
AIHW	Australian Institute of Health and Welfare
CCSS	Child Care Subsidy System
CSYBFS	Child-specific year before full-time school
ECEC	Early Childhood Education and Care
ECEC NMDS	Early Childhood Education and Care National Minimum Data Set
ERP	Estimated resident population
IRSD	Index of Relative Socio-economic Disadvantage
METEOR	AIHW's Metadata Online Registry
NECECC	National Early Childhood Education and Care Collection
NMDS	National Minimum Data Set
PI	Performance Indicator
PRA	Preschool Reform Agreement
SA	Statistical Area
SEIFA	Socio-Economic Indexes for Areas
SLK	Statistical linkage key
UANP	Universal Access National Partnership (National Partnership Agreement on Universal Access to Early Childhood Education)
URL	Unit record level
YBFS	Year before full-time school

## Introduction

The objective of the Preschool Reform Agreement (the Agreement) is to facilitate children's early learning and development and transition to school by:

- maintaining universal access to affordable, quality preschool programs for all children
- improving participation in preschool programs
- maximising the benefit of the preschool year by improving outcomes for children.

The following Performance Indicators (PI) inform the measurement of achievement of the objectives in the Agreement. In 2024, the data collected will inform a baseline, which will be used to set targets from 2025.

1: Proportion of children in the year before full-time school who are attending a preschool program (or programs) for 600 hours.

2.1: Proportion of Aboriginal and Torres Strait Islander children in the year before full-time school who are enrolled in a preschool program (or programs) for 600 hours.

2.2: Proportion of Aboriginal and Torres Strait Islander children in the year before full-time school who are attending a preschool program (or programs) for 600 hours.

3.1: Proportion of disadvantaged children in the year before full-time school who are enrolled in a preschool program (or programs) for 600 hours.

3.2: Proportion of disadvantaged children in the year before full-time school who are attending a preschool program (or programs) for 600 hours.

These specifications guide the calculation of the PIs at the national level to measure progress against performance benchmarks, and to allow a degree of comparison to be made at the state and territory level.

Data will be collected as at June and August to measure the achievement against benchmarks under the Agreement. Jurisdictions may provide contextual information to aid interpretation should they wish to do so. Data for the two collections may be provided to the ABS concurrently or as separate submissions. Submission timing will be confirmed through annual implementation plans.

The PI specifications have been developed by the Australian Bureau of Statistics (ABS) and the Department of Education.

### ***National Early Childhood Education and Care Collection (NECECC)***

The NECECC aims to provide nationally comparable information on early childhood education.

Historically it assisted in progress reporting for the:

- 2008-13 National Partnership Agreement on Early Childhood Education
- 2013-14 National Partnership Agreement on Universal Access to Early Childhood Education
- 2015 National Partnership Agreement on Universal Access to Early Childhood Education
- 2016-17 National Partnership Agreement on Universal Access to Early Childhood Education
- 2018-21 National Partnership Agreement on Universal Access to Early Childhood Education

The NECECC will be used to report progress against the PRA 2024-2025.

Data from the NECECC have been published annually by the ABS and are available on their website: <https://www.abs.gov.au/statistics/people/education/preschool-education-australia/latest-release> for the latest release and previous releases.

Supporting information is available in the:

- Preschool Education Australia methodology  
<https://www.abs.gov.au/methodologies/preschool-education-australia-methodology/2022><sup>1</sup>

## ***Early Childhood Education and Care National Minimum Data Set (ECEC NMDS)***

The NECECC is underpinned by data standards specified in the ECEC NMDS, which is maintained by the AIHW in the online metadata registry, METEOR, for the latest standards. standards <https://meteor.aihw.gov.au/content/344846>.

The PI Specifications are based on Appendix A.1 Enrolment and Attendance measures in the Agreement. The relevant ECEC NMDS data element names and corresponding METEOR identifiers are included in the PI Specifications. Further information on these can be found at each METEOR unique identifier.

## ***Definitions***

A number of terms have been defined and used within the Agreement. These definitions have been operationalised, where required, for implementation in the ECEC NMDS 2024-25 and the NECECC. Although these definitions may therefore be expressed differently in the ECEC NMDS, their interpretation is consistent with the Agreement.

Definitions of the following terms underpin the PI Specifications and should be read in conjunction with the PRA and its appendices.

### **Qualified early childhood teacher**

An early childhood education and care contact worker<sup>2</sup> who is a degree qualified early childhood teacher who meets the requirements of the National Quality Framework for Early Childhood Education and Care (the National Quality Framework)<sup>3</sup>.

### **Early childhood education program/ Preschool program**

An early childhood education program<sup>4</sup> or preschool program is a structured, play-based learning program, delivered by a qualified teacher in accordance with the Early Years Learning Framework and the National Quality Standard<sup>5</sup> and is aimed at children in the year or two before they commence full-time schooling, irrespective of the type of institution that provides it or whether it is government funded or privately provided. Programs may be delivered in a variety of service settings including separate preschools or kindergartens, long day care centres, in association with a school, etc.<sup>6</sup>

It is possible for multiple programs to be offered by the same service provider; however, the lowest reporting level common to all states and territories within the NECECC is the service provider level. Information is therefore collected at the service provider level for reporting in the NECECC, as specified in the ECEC NMDS, and the service provider is used in the PI Specifications as a proxy for 'programs'.

---

<sup>1</sup> The Commonwealth will update the methodology to align with data collection in relevant year.

<sup>2</sup> NMDS METEOR ID 763273

<sup>3</sup> NMDS METEOR ID 763336

<sup>4</sup> NMDS METEOR ID 762661

<sup>5</sup> NMDS METEOR ID 763288, or National Quality Framework/state equivalent as per Appendix A.1.

<sup>6</sup> NMDS METEOR ID 762661

## **Child-specific year before full-time school (CSYBFS)**

The child-specific year before full-time school (YBFS) indicates whether the child is in a YBFS preschool program and is defined by the child's date of birth, as well as the state-specific eligibility age for preschool and state-specific compulsory school age.

A child will be counted as being in the child-specific YBFS if, according to state rules, their birthdate means they are:

- eligible for preschool, and they become eligible for school the following year, but school is not compulsory the following year ('YBFS - school optional next year'), or
- eligible for preschool, and school is compulsory the following year ('YBFS - school compulsory next year'); and
- if they were in the YBFS-age range in the previous year, they were not enrolled in a YBFS preschool program in the previous year.

## **Year before full-time school (YBFS) population**

The new Estimated (predicted) YBFS will be used as a denominator for the enrolment performance indicators (PI 2.1 and 3.1).

The Estimated (predicted) YBFS is produced using a regression model, which uses ERP and historical Measured YBFS to estimate the YBFS for the current year.

The Measured YBFS uses pre-year 1 (foundation year) school enrolment data, lagged by one year, as the basis of the YBFS population. The schools' data is sourced from the National Schools Statistics Collection (NSSC).

To account for population changes between the YBFS year and the pre-year 1 year (foundation year) due to migration, an adjustment is made based on the latest estimated resident population (ERP) for the relevant ages.

The Estimated (predicted) YBFS enables an estimate to be provided for the current year, in a timely manner. Depending on confidence intervals and data availability, alternative estimation methods may be used, as agreed multilaterally.

Further information ABS Preschool Education — Methodology [Preschool Education Methodology, 2022 | Australian Bureau of Statistics \(abs.gov.au\)](#).<sup>7</sup>

---

<sup>7</sup> This will be updated to align with relevant year's collection.

## Performance Indicator 1 – All Children Attending

Indicator details	
Description	Proportion (x%) of children attending a preschool program (or programs) for y% of 600 hours in the child-specific year before full-time school (YBFS).
Numerator	The number of children in the child-specific YBFS who were enrolled at the enrolment reference point in Term 2 in a preschool program (or programs) offering at least 600 hours in the year, whose attendance hours during the attendance reference period are extrapolated to estimate annual hours greater than or equal to the agreed state or territory target of y% of 600 hours.
Numerator data elements	<p><u>Elements provided by the jurisdictions:</u></p> <ul style="list-style-type: none"> <li>• Enrolment in a preschool program code [<math>\geq</math> 600 hours, &lt; 600 hours, 2YBFS program]</li> <li>• Maximum annual preschool program hours available (conditional - answer if child is enrolled in a program for &lt; 600 hours)</li> <li>• Date of birth (<a href="#">METEOR Id 287007</a>)</li> <li>• YBFS preschool repeater flag – provided [optional]</li> <li>• Child-specific preschool program start date for the year</li> <li>• Child-specific preschool program end date for the year</li> <li>• Attendance reference period start date (Term, or CCSS weeks – may vary by setting)</li> <li>• Attendance reference period end date (Term, or CCSS weeks – may vary by setting)</li> <li>• Hours attended in attendance reference period (Term, or CCSS weeks)</li> <li>• Operationally unavailable hours (within attendance reference period) [optional]</li> <li>• Program weeks (annual) (regardless of child enrolment date)</li> <li>• Service provider organisation- Australian state/territory identifier (<a href="#">METEOR Id 289083</a>)</li> <li>• Service provider organisation – service activity type, early childhood education and care (<a href="#">METEOR Id 762656</a>)</li> </ul> <p><u>Elements derived by the ABS:</u></p> <ul style="list-style-type: none"> <li>• Enrolment at the enrolment reference point in Term 2 indicator</li> <li>• Child-specific enrolment status</li> <li>• YBFS eligibility</li> <li>• Child-specific YBFS status</li> <li>• YBFS preschool repeater flag - derived</li> <li>• Program weeks (attendance reference period)</li> <li>• Child – Estimated total annual attendance hours (extrapolated)</li> </ul> <p><u>Other data elements .</u></p> <ul style="list-style-type: none"> <li>• State-specific target y% of 600 hours<sup>8</sup></li> <li>• Policy target hours (annual)</li> <li>• Enrolment reference point in Term 2</li> </ul>
Denominator	The number of children in the child-specific YBFS enrolled in a 600 hour or more preschool program (or programs), at the enrolment reference point in Term 2.
Denominator data elements	<p><u>Elements provided by the jurisdictions:</u></p> <ul style="list-style-type: none"> <li>• Enrolment in a preschool program code [<math>\geq</math> 600 hours, &lt; 600 hours, 2YBFS program]</li> <li>• Maximum annual preschool program hours available (conditional- answer if child is enrolled in a program for &lt; 600 hours)</li> <li>• Date of birth (<a href="#">METEOR Id 287007</a>)</li> <li>• YBFS preschool repeater flag – provided [optional]</li> <li>• Child-specific preschool program start date for the year</li> <li>• Child-specific preschool program end date for the year</li> <li>• Service provider organisation – Australian state/territory identifier (<a href="#">METEOR Id 289083</a>)</li> </ul>

<sup>8</sup> To be agreed as part of the annual bilateral implementation plan discussion

	<ul style="list-style-type: none"> <li>Service provider organisation – service activity type, early childhood education and care (<a href="#">METEOR Id 762656</a>)</li> </ul> <p>Elements derived by the ABS:</p> <ul style="list-style-type: none"> <li>Enrolment at the enrolment reference point in Term 2 indicator</li> <li>Child-specific enrolment status</li> <li>YBFS eligibility</li> <li>Child-specific YBFS status</li> <li>YBFS preschool repeater flag – derived</li> </ul> <p>Other data elements:</p> <ul style="list-style-type: none"> <li>Policy target hours (annual)</li> <li>Enrolment reference point in Term 2</li> </ul>
Computation	<p>Numerator ÷ Denominator × 100 = Proportion</p> <p>Refer to flowcharts 1 and 2.</p> <p>Flowchart 1: Episode to child process flow, and calculation of child attendance hours.</p> <p>Flowchart 2: Proportion (x%) of children attending a preschool program (or programs) for y% of 600 hours in the child-specific YBFS.</p>
Presentation	Proportion
Identifiers	<p><u>Person ID (Statistical Linkage Key (SLK) 581):</u> The SLK will provide a unique identifier for the vast majority of children. For the small percentage who may have the same SLK, legitimate duplicates can be flagged by jurisdictions (within a dataset), by using a child/student database to check the name, date of birth, and sex of each child with an identical SLK. Matching SLKs that are not coincidental should be detected and flagged appropriately by jurisdictions.</p> <p><u>Geographic information:</u> Child level geographic information will be used to assist with matching episode records to enable estimation of attendance and enrolment information at the child level. Jurisdictions to supply a list of child addresses to ABS for geo-coding (timing to be negotiated bilaterally). Where agreed, child addresses will not be retained by the ABS.</p> <p>Service provider information will be used to determine the <i>Home-state</i> of the child and may be used to assist with matching episode records.</p>
Identifier and geographic data elements	<p><b><u>Child URL data elements:</u></b></p> <p><u>Provided by jurisdictions:</u></p> <ul style="list-style-type: none"> <li>Statistical linkage key 581 (<a href="#">METEOR Id 349895</a>)</li> <li>Child – SLK Sequential Match code</li> <li>Address – Address line (<a href="#">METEOR Id 594217</a>)</li> <li>Address – Suburb/town/locality name (<a href="#">METEOR Id 429889</a>)</li> <li>Person – Australian state/territory identifier (<a href="#">METEOR Id 286919</a>)</li> <li>Address - Australian postcode (<a href="#">METEOR Id 611398</a>)</li> </ul> <p><u>Derived by the ABS:</u></p> <ul style="list-style-type: none"> <li>Person – area of usual residence, geographic location (Mesh Block) code</li> <li>Address – statistical area level 1 (SA1) code (ASGS Edition 3)</li> </ul>



	<p><b>Service level data elements:</b>  <u>Provided by jurisdictions:</u></p> <ul style="list-style-type: none"> <li>• Service provider organisation – Organisation identifier (<a href="#">METEOR Id 731385</a>)</li> <li>• Organisation – organisation name (<a href="#">METEOR Id 453823</a>)</li> <li>• Address – Address line (<a href="#">METEOR Id 594217</a>)</li> <li>• Address – Suburb/town/locality name (<a href="#">METEOR Id 429889</a>)</li> <li>• Service provider organisation – Australian state/territory identifier (<a href="#">METEOR Id 289083</a>)</li> <li>• Address – Australian postcode (<a href="#">METEOR Id 611398</a>)</li> </ul>
Calculation rules	<p><b>Child level data:</b>  This performance indicator requires child level data. Children may attend more than one episode of preschool. To estimate child level attendance hours, attendance hours must first be estimated at the episode level, and then summed, where a child has more than one episode of preschool. Child level attendance hours will be estimated using the following steps:</p> <p><b>Step 1 – Estimate annual attendance hours for each episode</b>  Annual attendance hours for each episode will be estimated using the following steps:</p> <ul style="list-style-type: none"> <li>• If provided, ‘Operationally unavailable hours (within attendance reference period)’ are added to ‘Hours attended in attendance reference period (Term, or CCSS weeks)’</li> <li>• ‘Hours attended in attendance reference period (Term, or CCSS weeks)’ (where CCSS weeks are aggregated to the term level), will be divided by ‘Program weeks (attendance reference period)’ to calculate weekly average hours.</li> <li>• To extrapolate to the program-year, weekly average hours will then be multiplied by total ‘Program weeks (annual)’ for that episode.</li> </ul> <p><b>Step 2 – Where a child has multiple episodes of preschool, sum estimated annual attendance hours for each episode, and assign to the Home-state (based on Appendix A.1. rules).</b>  <i>The Home-State is the state of the child’s service address for the enrolment reference point or period, where that service records the greatest number of program hours for the child [up to 600hrs]. If a child has equal program hours across two or more states, for the purposes of the attendance performance indicators the Home-State is the state for which the greatest number of attendance hours have been recorded (Appendix A1 glossary).</i></p> <p>For children who were enrolled simultaneously across more than one jurisdiction at the enrolment reference point in Term 2, attendance hours in each state will be extrapolated according to the state specific attendance reference period. Extrapolated hours for each jurisdiction will be summed and assigned to the <i>Home-state</i> (Appendix A1. 4.10.2). For children who were enrolled consecutively in more than one jurisdiction in Term 2, only Term 2 data will be used and any periods of interstate attendance during consecutive enrolments outside of Term 2 will not be counted (Appendix A.1. 4.10.3).</p> <p>For further information on creating unique child records from episode data, including how to treat duplicate episodes, multiple attendance reference periods and consecutive and simultaneous interstate enrolments, see ‘Flowchart 1: Episode to child process flow, and estimation of annual child attendance hours’.</p>

#### Determining the child-specific YBFS

A child will be counted as being in the child-specific YBFS if, according to state rules, their birthdate means they are:

- eligible for preschool, and they become eligible for school the following year, but school is not compulsory the following year ('YBFS - school optional next year'), or
- eligible for preschool, and school is compulsory the following year ('YBFS - school compulsory next year'); and
  - if they were in the YBFS-age range in the previous year, they were not enrolled in a YBFS preschool program in the previous year. This will be established by using a combination of:
    - YBFS preschool repeater flag – provided
    - YBFS preschool repeater flag – derived (derived by linking unit level preschool data with the previous year's preschool data)

This will be operationalised through the following steps:

1. Children will be grouped in to the following four categories (described in data element 'YBFS eligibility') according to their date of birth, age at which children become eligible for YBFS preschool (state-specific), and compulsory school age (state-specific):
  1. = Younger than the YBFS-age range
  2. = YBFS–school optional next year
  3. = YBFS–school compulsory next year
  4. = Exemption/exception to compulsory school
2. If a child is:
  - categorised as YBFS–school optional next year and
  - they are enrolled in a 600-hour or more preschool program (or programs)
  - Then, child-specific YBFS status = 'Yes'.Or, if a child is:
  - categorised as YBFS–school compulsory next year and
  - they are enrolled in a 600-hour or more preschool program (or programs), and
  - in the previous year they were not enrolled in a 600-hour or more preschool program (or programs) or were enrolled in a 2YBFS program (as determined by linking to preschool enrolment data for the previous year)
  - Then, child-specific YBFS status = 'Yes'All other combinations result in a child-specific YBFS status of 'No'.

Note: Where an alternative definition of preschool has been agreed in a state's Implementation Plan, consistent with the PRA, only programs that are consistent with the definition will be counted when calculating performance indicators.

#### Numerator:

The numerator will be calculated by summing all children who are in the child-specific YBFS who:

- Have an 'Enrolled in a preschool program of 600 hours or more' (code 1) response to the data element 'Enrolment in a preschool program code', or
- Have an 'Enrolled in a preschool program of less than 600 hours' (code 2) response for 'Enrolment in a preschool program code' but for matched episodes, the element 'Maximum annual preschool program hours available' totals at least 600 hours, and
- Are enrolled in a preschool program (or programs) at the enrolment reference point in Term 2, and
- Whose attendance hours during the attendance reference period are extrapolated to estimate annual hours equal to or greater than the agreed state or territory target of y% of 600 hours.

	<p><u>Denominator:</u> The denominator will be calculated by summing all children in the child-specific YBFS who:</p> <ul style="list-style-type: none"> <li>• Have an 'Enrolled in a preschool program of 600 hours or more' (code 1) response to the data element 'Enrolment in a preschool program code', or</li> <li>• Have an 'Enrolled in a preschool program of less than 600 hours' (code 2) response for 'Enrolment in a preschool program code' but for matched episodes, the element 'Maximum annual preschool program hours available' totals at least 600 hours, and</li> <li>• Are enrolled in a preschool program (or programs) at the enrolment reference point in Term 2.</li> </ul>
Data collection details	
Data source(s)	<p><u>Numerator:</u> NECECC Attendance (June) <u>Denominator:</u> NECECC Enrolled (June)</p>
Frequency of data source collection	<p><u>Numerator:</u> Annual <u>Denominator:</u> Annual</p>

## Performance Indicator 2.1 Aboriginal and Torres Strait Islander Children Enrolled

Indicator details	
Description	Proportion (x%) of Aboriginal and Torres Strait Islander children enrolled in a preschool program (or programs) for 600 hours or more, in the child-specific year before full-time school (YBFS).
Numerator	The number of Aboriginal and Torres Strait Islander children in the child-specific YBFS who were enrolled in a 600-hour (or more) program (or programs) during the enrolment reference period in August.
Numerator data elements	<p><u>Elements provided by the jurisdictions:</u></p> <ul style="list-style-type: none"> <li>• Child - Early childhood education program enrolment indicator (<a href="#">METEOR Id 762886</a>)</li> <li>• Child - Early childhood education program hours enrolled (per week) (<a href="#">METEOR Id 763021</a>)</li> <li>• Child - Early childhood education program 2YBFS indicator [optional]</li> <li>• Child - Early childhood education program repeater indicator (<a href="#">METEOR Id 602323</a>)</li> <li>• Child - Early childhood education program repeater indicator – state-funded [conditional – answer if child is identified as repeater]</li> <li>• Person - Date of birth (<a href="#">METEOR Id 287007</a>)</li> <li>• Person - Indigenous status (<a href="#">METEOR Id 602543</a>)</li> <li>• Service provider - Number of early childhood education program service operation weeks (<a href="#">METEOR Id 602358</a>)</li> <li>• Service provider organisation - Australian state/territory identifier (<a href="#">METEOR Id 289083</a>)</li> </ul> <p><u>Elements derived by the ABS:</u></p> <ul style="list-style-type: none"> <li>• YBFS eligibility</li> <li>• Child-specific YBFS status</li> <li>• YBFS preschool repeater flag – derived</li> <li>• Total enrolled hours</li> </ul>
Denominator	The estimated number of Aboriginal and Torres Strait Islander children in the YBFS, for each jurisdiction as at the collection year.
Denominator data elements	<p><u>Elements derived by the ABS:</u></p> <p>The estimated number of Aboriginal and Torres Strait Islander children in the YBFS, for each jurisdiction as at the collection year.</p> <p>Element will be based on:</p> <ul style="list-style-type: none"> <li>• Schools, Australia, student enrolments</li> <li>• Estimated Resident Population (ERP) of children aged 4, 5, or 4 and 5</li> </ul> <p>Or,</p> <ul style="list-style-type: none"> <li>• If required, other method as agreed multilaterally (Appendix A1 6.15).</li> </ul>
Computation	<p>Numerator ÷ Denominator × 100 = Proportion</p> <p>Refer to Flowchart 3: Proportion (x%) of children enrolled in a preschool program (or programs) for 600 hours or more in the child-specific year before full-time school (YBFS).</p>
Presentation	Proportion
Identifiers	<p>Person ID (<a href="#">Statistical Linkage Key (SLK) 581</a>):</p> <p>The SLK will provide a unique identifier for the vast majority of children. For the small percentage who may have the same SLK, legitimate duplicates can be identified by jurisdictions by using a child/student database to check the name, date of birth, sex, and state of each child with an identical SLK. Matching SLKs that are not coincidental should be detected and flagged appropriately by jurisdictions.</p>

	<p><u>Geographic information:</u> Child level geographic information will be used to assist with matching episode records to enable estimation of attendance and enrolment information at the child level. Jurisdictions to supply a list of child addresses to ABS for geo-coding (timing to be negotiated bilaterally). Where agreed, child addresses will not be retained by the ABS.</p> <p>Service provider information will be used to determine the <i>Home-state</i> of the child and may be used to assist with matching episode records.</p>
Identifier and geographic data elements	<p><b><u>Child/URL data elements:</u></b> <u>Provided by jurisdictions:</u></p> <ul style="list-style-type: none"> <li>• Statistical Linkage Key 581 (<a href="#">METEOR Id 349895</a>)</li> <li>• Child – SLK Sequential Match code</li> <li>• Address - Address line (<a href="#">METEOR Id 594217</a>)</li> <li>• Address - Suburb/town/locality name (<a href="#">METEOR Id 429889</a>)</li> <li>• Person - Australian state/territory identifier (<a href="#">METEOR Id 286919</a>)</li> <li>• Address - Australian postcode (<a href="#">METEOR Id 611398</a>)</li> </ul> <p><u>Derived by the ABS:</u></p> <ul style="list-style-type: none"> <li>• Person – area of usual residence, geographic location (Mesh Block) code</li> <li>• Address – statistical area level 1 (SA1) code (ASGS Edition 3)</li> </ul> <p><b><u>Service level data elements:</u></b> <u>Provided by jurisdictions</u></p> <ul style="list-style-type: none"> <li>• Service provider organisation – Organisation identifier (<a href="#">METEOR Id 731385</a>)</li> <li>• Organisation- organisation name (<a href="#">METEOR Id 453823</a>)</li> <li>• Address - Address line (<a href="#">METEOR Id 594217</a>)</li> <li>• Address - Suburb/town/locality name (<a href="#">METEOR Id 429889</a>)</li> <li>• Service provider organisation- Australian state/territory identifier (<a href="#">METEOR Id 289083</a>)</li> <li>• Address – Australian postcode (<a href="#">METEOR Id 611398</a>)</li> </ul>
Calculation rules	<p><u>Child level data:</u> This performance indicator requires child level data. Children may be enrolled in more than one [episode of a] preschool program. To determine the total enrolled hours for the child, episode records will be matched using SLK [and other information, such as geography]. Where a child is enrolled in more than one preschool program, all enrolled hours for all [episodes of a] preschool program (or programs) will be summed.</p> <p>For more information on creating unique child records from episode data, including how to treat multiple enrolments and repeat enrolments over time, see Appendix B.1: ‘Creating unique child records from episode records’.</p> <p><u>Determining the child-specific YBFS</u> A child will be counted as being in the child-specific YBFS if, according to state rules, their birthdate means they are:</p> <ul style="list-style-type: none"> <li>• eligible for preschool, and they become eligible for school the following year, but school is not compulsory the following year (“YBFS - school optional next year”), or</li> <li>• eligible for preschool, and school is compulsory the following year (“YBFS - school compulsory next year”); and       <ul style="list-style-type: none"> <li>○ if they were in the YBFS-age range in the previous year, they were not enrolled in a YBFS preschool program in the previous year. This will be established by using a combination of:           <ul style="list-style-type: none"> <li>▪ YBFS preschool repeater flag – provided</li> <li>▪ YBFS preschool repeater flag – derived (derived by linking unit level preschool data with the previous year’s preschool data)</li> </ul> </li> </ul> </li> </ul> <p>This will be operationalised through the following steps:</p>

1. Children will be grouped in to the following four categories (described in data element 'YBFS eligibility') according to their date of birth, age at which children become eligible for YBFS preschool (state-specific), and compulsory school age (state-specific):
    1. = Younger than the YBFS-age range
    2. = YBFS–school optional next year
    3. = YBFS–school compulsory next year
    4. = Exemption/exception to compulsory school
  2. If a child is:
    - categorised as YBFS–school optional next year and
    - they are enrolled in a 600-hour or more preschool program (or programs)
    - Then, child-specific YBFS status = 'Yes'.
- Or, if a child is:
- categorised as YBFS–school compulsory next year and
  - they are enrolled in a 600-hour or more preschool program (or programs), and
  - in the previous year they were not enrolled in a 600-hour or more preschool program (or programs) or were enrolled in a 2YBFS program (as determined by linking to preschool enrolment data for the previous year)
  - Then, child-specific YBFS status = 'Yes'
- All other combinations result in a child-specific YBFS status of 'No'.

Note: Where an alternative definition of preschool has been agreed in a state's Implementation Plan, consistent with the PRA, only programs that are consistent with the definition will be counted when calculating performance indicators.

Numerator:

The numerator will be obtained by summing all children in the Aboriginal and Torres Strait Islander population who are in the child-specific YBFS and who:

- Have a 'Yes' response to the child level data element 'Child- Early childhood education program enrolment indicator', and
- Are enrolled in a 600-hour (or more) program (or programs), determined using the data element 'Child - Early childhood education program hours enrolled (per week)' multiplied by the data element 'Service provider - Number of early childhood education program service operation weeks' to get total hours enrolled in the year.

Denominator:

The denominator will be based on the estimated (predicted) year before full-time school (YBFS) population for Aboriginal and Torres Strait Islander children. Estimated (predicted) YBFS refers to the estimates obtained by a regression model using 4-year-old estimated resident population (ERP), 5-year-old ERP, or 4 and 5-year-old ERP (chosen based on the highest explanatory power) and historical measured YBFS. Measured YBFS is determined using pre-year 1 school enrolment data lagged by one year and adjusted for net migration using ERP.

Or

Another method, agreed multilaterally (Appendix A1 6.15)

Data collection details

Data source(s)	<p>Numerator: NECECC Enrolled (August)</p> <p>Denominator: Estimates and Projections, Aboriginal and Torres Strait Islander Australians <a href="#">Estimates and Projections, Aboriginal and Torres Strait Islander Australians, 2006 - 2031   Australian Bureau of Statistics (abs.gov.au)</a>;</p> <p>Schools, Australia (latest) <a href="#">Schools   Australian Bureau of Statistics (abs.gov.au)</a></p> <p>Note: One, or both data sources may be used, as agreed multilaterally.</p>
Frequency of data source collection	<p>Numerator: Annual</p> <p>Denominator: Annual</p>

## Performance Indicator 2.2 Aboriginal and Torres Strait Islander Children Attending

Indicator details	
Description	Proportion (x%) of Aboriginal and Torres Strait Islander children attending a preschool program (or programs) for y% of 600 hours in the child-specific year before full-time school (YBFS).
Numerator	The number of Aboriginal and Torres Strait Islander children in the child-specific YBFS who were enrolled at the enrolment reference point in Term 2 in a preschool program (or programs) offering at least 600 hours in the year, whose attendance hours during the attendance reference period are extrapolated to estimate annual hours greater than or equal to the agreed state or territory target of y% of 600 hours.
Numerator data elements	<p>Elements provided by the <b>jurisdictions</b>:</p> <ul style="list-style-type: none"> <li>• Enrolment in a preschool program code [<math>\geq</math> 600 hours, &lt; 600 hours, 2YBFS program]</li> <li>• Maximum annual preschool program hours available (conditional- answer if child is enrolled in a program for &lt; 600 hours)</li> <li>• Date of birth (<a href="#">METEOR Id 287007</a>)</li> <li>• Indigenous status (<a href="#">METEOR Id 602543</a>)</li> <li>• YBFS preschool repeater flag – provided [optional]</li> <li>• Child-specific preschool program start date for the year</li> <li>• Child-specific preschool program end date for the year</li> <li>• Attendance reference period start date (Term, or CCSS weeks – may vary by setting)</li> <li>• Attendance reference period end date (Term, or CCSS weeks – may vary by setting)</li> <li>• Hours attended in attendance reference period (Term, or CCSS weeks)</li> <li>• Operationally unavailable hours (within attendance reference period) [optional]</li> <li>• Program weeks (annual) (regardless of child enrolment date)</li> <li>• Service provider organisation- Australian state/territory identifier (<a href="#">METEOR Id 289083</a>)</li> <li>• Service provider organisation – service activity type, early childhood education and care (<a href="#">METEOR Id 762656</a>)</li> </ul> <p>Elements derived by the <b>ABS</b>:</p> <ul style="list-style-type: none"> <li>• Enrolment at the enrolment reference point in Term 2 indicator</li> <li>• Child-specific enrolment status</li> <li>• YBFS eligibility</li> <li>• Child-specific YBFS status</li> <li>• YBFS preschool repeater flag – derived</li> <li>• Program weeks (attendance reference period)</li> <li>• Child – Estimated total annual attendance hours (extrapolated)</li> </ul> <p>Other data elements</p> <ul style="list-style-type: none"> <li>• State-specific target y% of 600 hours<sup>9</sup></li> <li>• Policy target hours (annual)</li> <li>• Enrolment reference point in Term 2</li> </ul>
Denominator	The number of Aboriginal or Torres Strait Islander children in the child-specific YBFS enrolled in a 600 hour or more preschool program (or programs) at the enrolment reference point in Term 2.
Denominator data elements	<p>Elements provided by the <b>jurisdictions</b>:</p> <ul style="list-style-type: none"> <li>• Enrolment in a preschool program code [<math>\geq</math> 600 hours, &lt; 600 hours, 2YBFS program]</li> <li>• Maximum annual preschool program hours available (conditional- answer if child is enrolled in a program for &lt; 600 hours)</li> <li>• Date of birth (<a href="#">METEOR Id 287007</a>)</li> <li>• Indigenous status (<a href="#">METEOR Id 602543</a>)</li> </ul>

<sup>9</sup> To be agreed as part of the annual bilateral implementation plan discussion.



	<ul style="list-style-type: none"> <li>• YBFS preschool repeater flag – provided [optional]</li> <li>• Child-specific preschool program start date for the year</li> <li>• Child-specific preschool program end date for the year</li> <li>• Service provider organisation- Australian state/territory identifier (<a href="#">METEOR Id 289083</a>)</li> <li>• Service provider organisation – service activity type, early childhood education and care (<a href="#">METEOR Id 762656</a>)</li> </ul> <p><u>Elements derived by the ABS:</u></p> <ul style="list-style-type: none"> <li>• Enrolment at the enrolment reference point in Term 2 indicator</li> <li>• Child-specific enrolment status</li> <li>• YBFS eligibility</li> <li>• Child-specific YBFS status</li> <li>• YBFS preschool repeater flag – derived</li> </ul> <p><u>Other data elements:</u></p> <ul style="list-style-type: none"> <li>• Policy target hours (annual)</li> <li>• Enrolment reference point in Term 2</li> </ul>
Computation	<p>Numerator ÷ Denominator × 100 = Proportion</p> <p>Refer to flowcharts 1 and 2.</p> <p>Flowchart 1: Episode to child process flow, and calculation of child attendance hours.</p> <p>Flowchart 2: Proportion (x%) of children attending a preschool program (or programs) for y% of 600 hours in the child-specific YBFS.</p>
Presentation	Proportion
Identifiers	<p><u>Person ID (Statistical Linkage Key (SLK) 581):</u></p> <p>The SLK will provide a unique identifier for the vast majority of children. For the small percentage who may have the same SLK, legitimate duplicates can be flagged by jurisdictions (within a dataset), by using a child/student database to check the name, date of birth, and sex of each child with an identical SLK. Matching SLKs that are not coincidental should be detected and flagged appropriately by jurisdictions.</p> <p><u>Geographic information:</u></p> <p>Child level geographic information will be used to assist with matching episode records to enable estimation of attendance and enrolment information at the child level. Jurisdictions to supply a list of child addresses to ABS for geo-coding (timing to be negotiated bilaterally). Where agreed, child addresses will not be retained by the ABS.</p> <p>Service provider information will be used to determine the <i>Home-state</i> of the child and may be used to assist with matching episode records.</p>
Identifier and geographic data elements	<p><b><u>Child/URL data elements:</u></b></p> <p><u>Provided by jurisdictions:</u></p> <ul style="list-style-type: none"> <li>• Statistical linkage key 581 (<a href="#">METEOR Id 349895</a>)</li> <li>• Child – SLK Sequential Match code</li> <li>• Address – Address line (<a href="#">METEOR Id 594217</a>)</li> <li>• Address – Suburb/town/locality name (<a href="#">METEOR Id 429889</a>)</li> <li>• Person – Australian state/territory identifier (<a href="#">METEOR Id 286919</a>)</li> <li>• Address – Australian postcode (<a href="#">METEOR Id 611398</a>)</li> </ul> <p><u>Derived by the ABS:</u></p> <ul style="list-style-type: none"> <li>• Person – area of usual residence, geographic location (Mesh Block) code</li> <li>• Address – statistical area level 1 (SA1) code (ASGS Edition 3)</li> </ul>

	<p><b><u>Service level data elements:</u></b>  <u>Provided by jurisdictions</u></p> <ul style="list-style-type: none"> <li>• Service provider organisation – Organisation identifier (<a href="#">METEOR Id 731385</a>)</li> <li>• Organisation – organisation name (<a href="#">METEOR Id 453823</a>)</li> <li>• Address – Address line (<a href="#">METEOR Id 594217</a>)</li> <li>• Address – Suburb/town/locality name (<a href="#">METEOR Id 429889</a>)</li> <li>• Service provider organisation – Australian state/territory identifier (<a href="#">METEOR Id 289083</a>)</li> <li>• Address – Australian postcode (<a href="#">METEOR Id 611398</a>)</li> </ul>
Calculation rules	<p><b><u>Child level data:</u></b>  This performance indicator requires child level data. Children may attend more than one episode of preschool. To estimate child level attendance hours, attendance hours must first be estimated at the episode level, and then summed, where a child has more than one episode of preschool. Child level attendance hours will be estimated using the following steps:</p> <p><b><i>Step 1 – Estimate annual attendance hours for each episode</i></b>  Annual attendance hours for each episode will be estimated using the following steps:</p> <ul style="list-style-type: none"> <li>• If provided, ‘Operationally unavailable hours (within attendance reference period)’ are added to ‘Hours attended in attendance reference period (Term, or CCSS weeks)’</li> <li>• ‘Hours attended in attendance reference period (Term, or CCSS weeks)’ (where CCSS weeks are aggregated to the term level), will be divided by ‘Program weeks (attendance reference period)’ to calculate weekly average hours.</li> <li>• To extrapolate to the program-year, weekly average hours will then be multiplied by total ‘Program weeks (annual)’ for that episode.</li> </ul> <p><b><i>Step 2 – Where a child has multiple episodes of preschool, sum estimated annual attendance hours for each episode, and assign to the Home-state (based on Appendix A.1. rules).</i></b>  <i>The Home State is the state of the child’s service address for the enrolment reference point or period, where that service records the greatest number of program hours for the child [up to 600hrs]. If a child has equal program hours across two or more states, for the purposes of the attendance performance indicators the Home-State is the state for which the greatest number of attendance hours have been recorded (Appendix A1 glossary).</i></p> <p>For children who were enrolled simultaneously across more than one jurisdiction at the enrolment reference point in Term 2, attendance hours in each state will be extrapolated according to the state specific attendance reference period. Extrapolated hours for each jurisdiction will be summed and assigned to the <i>Home-state</i> (Appendix A1 4.10.2). For children who were enrolled consecutively in more than one jurisdiction in Term 2, only Term 2 data will be used and any periods of interstate attendance during consecutive enrolments outside of Term 2 will not be counted (Appendix A.1. 4.10.3).</p> <p>For further information on creating unique child records from episode data, including how to treat duplicate episodes, multiple attendance reference periods and consecutive and simultaneous interstate enrolments, see ‘Flowchart 1: Episode to child process flow, and estimation of annual child attendance hours’.</p> <p><b><u>Determining the child-specific YBFS</u></b>  A child will be counted as being in the child-specific YBFS if, according to state rules, their birthdate means they are:</p> <ul style="list-style-type: none"> <li>• eligible for preschool, and they become eligible for school the following year, but school is not compulsory the following year (‘YBFS - school optional next year’), or</li> <li>• eligible for preschool, and school is compulsory the following year (‘YBFS - school compulsory next year’); and</li> </ul>

	<ul style="list-style-type: none"> <li>○ if they were in the YBFS-age range in the previous year, they were not enrolled in a YBFS preschool program in the previous year. This will be established by using a combination of: <ul style="list-style-type: none"> <li>▪ YBFS preschool repeater flag – provided</li> <li>▪ YBFS preschool repeater flag – derived (derived by linking unit level preschool data with the previous year’s preschool data)</li> </ul> </li> </ul> <p>This will be operationalised through the following steps:</p> <ol style="list-style-type: none"> <li>1. Children will be grouped in to the following four categories (described in data element ‘YBFS eligibility’) according to their date of birth, age at which children become eligible for YBFS preschool (state-specific), and compulsory school age (state-specific): <ol style="list-style-type: none"> <li>1. = Younger than the YBFS-age range</li> <li>2. = YBFS–school optional next year</li> <li>3. = YBFS–school compulsory next year</li> <li>4. = Exemption/exception to compulsory school</li> </ol> </li> <li>2. If a child is: <ul style="list-style-type: none"> <li>○ categorised as YBFS–school optional next year and</li> <li>○ they are enrolled in a 600-hour or more preschool program (or programs)</li> <li>○ Then, child-specific YBFS status = ‘Yes’.</li> </ul> </li> </ol> <p>Or, if a child is:</p> <ul style="list-style-type: none"> <li>○ categorised as YBFS–school compulsory next year and</li> <li>○ they are enrolled in a 600-hour or more preschool program (or programs), and</li> <li>○ in the previous year they were not enrolled in a 600-hour or more preschool program (or programs) or were enrolled in a 2YBFS program (as determined by linking to preschool enrolment data for the previous year)</li> <li>○ Then, child-specific YBFS status = ‘Yes’</li> </ul> <p>All other combinations result in a child-specific YBFS status of ‘No’.</p> <p>Note: Where an alternative definition of preschool has been agreed in a state's Implementation Plan, consistent with the PRA, only programs that are consistent with the definition will be counted when calculating performance indicators.</p> <p><u>Numerator:</u> The numerator will be calculated by summing all children in the Aboriginal and Torres Strait Islander population who are in the child-specific YBFS and who:</p> <ul style="list-style-type: none"> <li>• Have an ‘Enrolled in a preschool program of 600 hours or more’ (code 1) response to the data element ‘Enrolment in a preschool program code’, or</li> <li>• Have an ‘Enrolled in a preschool program of less than 600 hours’ (code 2) response for ‘Enrolment in a preschool program code’ but for matched episodes, the element ‘Maximum annual preschool program hours available’ totals at least 600 hours, and</li> <li>• Are enrolled in a preschool program (or programs) at the enrolment reference point in Term 2, and</li> <li>• Whose attendance hours during the attendance reference period are extrapolated to estimate annual hours equal to or greater than the agreed state or territory target of y% of 600 hours.</li> </ul> <p><u>Denominator:</u> The denominator will be calculated by summing all children in the Aboriginal and Torres Strait Islander population in the child-specific YBFS and who:</p> <ul style="list-style-type: none"> <li>• Have an ‘Enrolled in a preschool program of 600 hours or more’ (code 1) response to the data element ‘Enrolment in a preschool program code’, or</li> </ul>
--	---

	<ul style="list-style-type: none"> <li>• Have an 'Enrolled in a preschool program of less than 600 hours' (code 2) response for 'Enrolment in a preschool program code' but for matched episodes, the element 'Maximum annual preschool program hours available' totals at least 600 hours, and</li> <li>• Are enrolled in a preschool program (or programs) at the enrolment reference point in Term 2.</li> </ul>
Data collection details	
Data source(s)	<u>Numerator:</u> NECECC Attendance (June) <u>Denominator:</u> NECECC Enrolled (June)
Frequency of data source collection	<u>Numerator:</u> Annual <u>Denominator:</u> Annual

## Performance Indicator 3.1 Disadvantaged Children Enrolled

Indicator details	
Description	Proportion (x%) of disadvantaged <sup>10</sup> children enrolled in a preschool program (or programs) for 600 hours or more, in the child-specific year before full-time school (YBFS)
Numerator	The number of children resident in a Socio-Economic Index for Areas (SEIFA) Index of Relative Socio-economic Disadvantage (IRSD) Quintile 1 in the child-specific YBFS, who were enrolled in a 600-hour (or more) program (or programs) during the enrolment reference period in August.
Numerator data elements	<p><u>Elements provided by the jurisdictions:</u></p> <ul style="list-style-type: none"> <li>• Child - Early childhood education program enrolment indicator (<a href="#">METEOR Id 762886</a>)</li> <li>• Child - Early childhood education program hours enrolled (per week) (<a href="#">METEOR Id 763021</a>)</li> <li>• Child - Early childhood education program 2YBFS indicator [optional]</li> <li>• Child - Early childhood education program repeater indicator (<a href="#">METEOR Id 602323</a>)</li> <li>• Child - Early childhood education program repeater indicator – state-funded [conditional – answer if child is identified as repeater]</li> <li>• Person - Date of birth (<a href="#">METEOR Id 287007</a>)</li> <li>• Service provider - Number of early childhood education program service operation weeks (<a href="#">METEOR Id 602358</a>)</li> <li>• Service provider organisation - Australian state/territory identifier (<a href="#">METEOR Id 289083</a>)</li> </ul> <p><u>Elements derived by the ABS:</u></p> <ul style="list-style-type: none"> <li>• SEIFA (2021 Census, ASGS Edition 3) cluster</li> <li>• YBFS eligibility</li> <li>• Child-specific YBFS status</li> <li>• YBFS preschool repeater flag – derived</li> <li>• Total enrolled hours</li> </ul>
Denominator	The estimated number of YBFS children resident in a Socio-Economic Index for Areas (SEIFA) Index of Relative Socio-economic Disadvantage (IRSD) Quintile 1 for each jurisdiction as at the collection year.
Denominator data elements	<p><u>Elements derived by the ABS:</u></p> <p>The estimated number of YBFS children resident in a Socio-Economic Index for Areas (SEIFA) Index of Relative Socio-economic Disadvantage (IRSD) Quintile 1 as at the collection year for each jurisdiction.</p> <p>Element will be based on:</p> <ul style="list-style-type: none"> <li>• Schools, Australia, student enrolments</li> <li>• Estimated Resident Population (ERP) of children aged 4, 5 or 4 and 5</li> </ul> <p>Or,</p> <ul style="list-style-type: none"> <li>• If required, other method as agreed multilaterally (Appendix A1 6.15).</li> </ul>
Computation	<p>Numerator ÷ Denominator × 100 = Proportion</p> <p>Refer to Flowchart 3: Proportion (x%) of children enrolled in a preschool program (or programs) for 600 hours or more in the child-specific year before full-time school (YBFS)</p>
Presentation	Proportion
Identifiers	<p>Person ID (<a href="#">Statistical Linkage Key (SLK) 581</a>):</p> <p>The SLK will provide a unique identifier for the vast majority of children. For the small percentage who may have the same SLK, legitimate duplicates can be identified by jurisdictions by using a child/student database to check the name, date of birth, sex, and state of each child with an identical SLK. Matching SLKs that are not coincidental should be detected and flagged appropriately by jurisdictions.</p>

<sup>10</sup> States may use an alternative to Socio-Economic Index for Areas (Index of Relative Socio-economic Disadvantage) for their performance reporting where agreed bilaterally with the Australian Government in Implementation Plans as per 3.1 of Appendix A.1. Preschool Reform Agreement – Appendix B (Performance Indicator Specifications)

	<p><u>Geographic information:</u> Child level geographic information will be used to assist with matching episode records to enable estimation of attendance and enrolment information at the child level. Jurisdictions to supply a list of child addresses to ABS for geo-coding (timing to be negotiated bilaterally). Where agreed, child addresses will not be retained by the ABS.</p> <p>Service provider information will be used to determine the <i>Home-state</i> of the child and may be used to assist with matching episode records.</p>
Identifier and geographic data elements	<p><b><u>Child/URL data elements:</u></b> <u>Provided by jurisdictions:</u></p> <ul style="list-style-type: none"> <li>• Statistical Linkage Key 581 (<a href="#">METEOR Id 349895</a>)</li> <li>• Child – SLK Sequential Match code</li> <li>• Address – Address line (<a href="#">METEOR Id 594217</a>)</li> <li>• Address – Suburb/town/locality name (<a href="#">METEOR Id 429889</a>)</li> <li>• Person – Australian state/territory identifier (<a href="#">METEOR Id 286919</a>)</li> <li>• Address – Australian postcode (<a href="#">METEOR Id 611398</a>)</li> </ul> <p><u>Derived by the ABS:</u></p> <ul style="list-style-type: none"> <li>• Person – area of usual residence, geographic location (Mesh Block) code</li> <li>• Address – statistical area level 1 (SA1) code (ASGS Edition 3)</li> <li>• SEIFA (2021 Census, ASGS Edition 3) cluster</li> </ul> <p><b><u>Service level data elements:</u></b> <u>Provided by jurisdictions</u></p> <ul style="list-style-type: none"> <li>• Service provider organisation – Organisation identifier (<a href="#">METEOR Id 731385</a>)</li> <li>• Organisation- organisation name (<a href="#">METEOR Id 453823</a>)</li> <li>• Address – Address line (<a href="#">METEOR Id 594217</a>)</li> <li>• Address – Suburb/town/locality name (<a href="#">METEOR Id 429889</a>)</li> <li>• Service provider organisation- Australian state/territory identifier (<a href="#">METEOR Id 289083</a>)</li> <li>• Address – Australian postcode (<a href="#">METEOR Id 611398</a>)</li> </ul>
Calculation rules	<p><u>Child level data:</u> This performance indicator requires child level data. Children may be enrolled in more than one [episode of a] preschool program. To determine the total enrolled hours for the child, episode records will be matched using SLK [and other information, such as geography]. Where a child is enrolled in more than one preschool program, all enrolled hours for all [episodes of a] preschool program (or programs) will be summed.</p> <p>For more information on creating unique child records from episode data, including how to treat multiple enrolments and repeat enrolments over time, see Appendix B.1: 'Creating unique child records from episode records'.</p> <p><u>Determining the child-specific YBFS</u> A child will be counted as being in the child-specific YBFS if, according to state rules, their birthdate means they are:</p> <ul style="list-style-type: none"> <li>• eligible for preschool, and they become eligible for school the following year, but school is not compulsory the following year ('YBFS - school optional next year'), or</li> <li>• eligible for preschool, and school is compulsory the following year ('YBFS - school compulsory next year'); and <ul style="list-style-type: none"> <li>○ if they were in the YBFS-age range in the previous year, they were not enrolled in a YBFS preschool program in the previous year. This will be established by using a combination of:</li> </ul> </li> </ul>

- YBFS preschool repeater flag – provided
- YBFS preschool repeater flag – derived (derived by linking unit level preschool data with the previous year’s preschool data)

This will be operationalised through the following steps:

1. Children will be grouped in to the following four categories (described in data element ‘YBFS eligibility’) according to their date of birth, age at which children become eligible for YBFS preschool (state-specific), and compulsory school age (state-specific):

1. = Younger than the YBFS-age range
2. = YBFS–school optional next year
3. = YBFS–school compulsory next year
4. = Exemption/exception to compulsory school

2. If a child is:

- categorised as YBFS–school optional next year and
- they are enrolled in a 600-hour or more preschool program (or programs)
- Then, child-specific YBFS status = ‘Yes’.

Or, if a child is:

- categorised as YBFS–school compulsory next year and
- they are enrolled in a 600-hour or more preschool program (or programs), and
- in the previous year they were not enrolled in a 600-hour or more preschool program (or programs) or were enrolled in a 2YBFS program (as determined by linking to preschool enrolment data for the previous year)
- Then, child-specific YBFS status = ‘Yes’

All other combinations result in a child-specific YBFS status of ‘No’.

Note: Where an alternative definition of preschool has been agreed in a state's Implementation Plan, consistent with the PRA, only programs that are consistent with the definition will be counted when calculating performance indicators.

Numerator:

The numerator will be obtained by summing all children in the child-specific YBFS who reside in areas with a SEIFA IRSD quintile of 1 and who:

- Have a ‘Yes’ response to the child level data element ‘Child - Early childhood education program enrolment indicator’, and
- Are enrolled in a 600-hour (or more) program (or programs), determined using the data element ‘Child - Early childhood education program hours enrolled (per week)’ multiplied by the data element ‘Service provider - Number of early childhood education program service operation weeks’ to get total hours enrolled in the year.

Denominator:

The denominator will be based on the estimated (predicted) year before full-time school (YBFS) population for children who reside in SEIFA IRSD quintile 1. Estimated (predicted) YBFS refers to the estimates obtained by a regression model using 4-year-old estimated resident population (ERP), 5-year-old ERP, or 4 and 5-year-old ERP (chosen based on the highest explanatory power) and historical measured YBFS. Measured YBFS is determined using pre-year 1 school enrolment data lagged by one year and adjusted for net migration using ERP.

Or,

Another method, agreed multilaterally (Appendix A1 6.15)

Data collection details	
Data source(s)	<p>Numerator: NECECC Enrolled (August)</p> <p>Denominator: ABS Estimated Resident Population, available from National, state and territory population published on <a href="https://www.abs.gov.au/statistics/people/population/national-state-and-territory-population/latest-release">https://www.abs.gov.au/statistics/people/population/national-state-and-territory-population/latest-release</a></p> <p>Schools, Australia (latest) <a href="https://www.abs.gov.au/statistics/people/population/national-state-and-territory-population/latest-release">Schools   Australian Bureau of Statistics (abs.gov.au)</a></p> <p><u>Note: One, or both data sources may be used, as agreed multilaterally.</u></p>
Frequency of data source collection	<p>Numerator: Annual</p> <p>Denominator: Annual</p>



## Performance Indicator 3.2 Disadvantaged Children Attending

Indicator details	
Description	Proportion (x%) of disadvantaged <sup>11</sup> children attending a preschool program (or programs) for y% of 600 hours in the child-specific year before full-time school (YBFS).
Numerator	The number of children resident in a Socio-Economic Index for Areas (SEIFA) Index of Relative Socio-economic Disadvantage (IRSD) Quintile 1 in the child-specific YBFS who were enrolled at the enrolment reference point in Term 2 in a preschool program (or programs) offering at least 600 hours in the year, whose attendance hours during the attendance reference period are extrapolated to estimate annual hours greater than or equal to the agreed state or territory target of y% of 600 hours.
Numerator data elements	<p>Elements provided by the <b>jurisdictions</b>:</p> <ul style="list-style-type: none"> <li>• Enrolment in a preschool program code [<math>\geq</math> 600 hours, &lt; 600 hours, 2YBFS program]</li> <li>• Maximum annual preschool program hours available (conditional- answer if child is enrolled in a program for &lt; 600 hours)</li> <li>• Date of birth (<a href="#">METEOR Id 287007</a>)</li> <li>• YBFS preschool repeater flag – provided [optional]</li> <li>• Child-specific preschool program start date for the year</li> <li>• Child-specific preschool program end date for the year</li> <li>• Attendance reference period start date (Term, or CCSS weeks – may vary by setting)</li> <li>• Attendance reference period end date (Term, or CCSS weeks – may vary by setting)</li> <li>• Hours attended in attendance reference period (Term, or CCSS weeks)</li> <li>• Operationally unavailable hours (within attendance reference period) [optional]</li> <li>• Program weeks (annual) (regardless of child enrolment date)</li> <li>• Service provider organisation- Australian state/territory identifier (<a href="#">METEOR Id 289083</a>)</li> <li>• Service provider organisation – service activity type, early childhood education and care (<a href="#">METEOR Id 762656</a>)</li> </ul> <p>Elements derived by the <b>ABS</b>:</p> <ul style="list-style-type: none"> <li>• Enrolment at the enrolment reference point in Term 2 indicator</li> <li>• Child-specific enrolment status</li> <li>• YBFS eligibility</li> <li>• Child-specific YBFS status</li> <li>• YBFS preschool repeater flag - derived</li> <li>• Program weeks (attendance reference period)</li> <li>• SEIFA (2021 Census, ASGS Edition 3) cluster</li> <li>• Child – Estimated total annual attendance hours (extrapolated)</li> </ul> <p>Other data elements:</p> <ul style="list-style-type: none"> <li>• State-specific target y% of 600 hours<sup>12</sup></li> <li>• Policy target hours (annual)</li> <li>• Enrolment reference point in Term 2</li> </ul>
Denominator	The number of children resident in Socio-Economic Index for Areas (SEIFA) Index of Relative Socio-economic Disadvantage (IRSD) Quintile 1 in the child-specific YBFS who were enrolled in a 600-hour or more preschool program (or programs) at the enrolment reference point in Term 2.

<sup>11</sup> States may use an alternative to Socio-Economic Index for Areas (Index of Relative Socio-economic Disadvantage) for their performance reporting where agreed bilaterally with the Australian Government in Implementation Plans as per 3.1 of Appendix A.1.

<sup>12</sup> To be agreed as part of the annual bilateral implementation plan discussion

Denominator data elements	<p><u>Elements provided by the jurisdictions:</u></p> <ul style="list-style-type: none"> <li>• Enrolment in a preschool program code [<math>\geq</math> 600 hours, &lt; 600 hours, 2YBFS program]</li> <li>• Maximum annual preschool program hours available (conditional- answer if child is enrolled in a program for &lt; 600 hours)</li> <li>• Date of birth (<a href="#">METEOR Id 287007</a>)</li> <li>• YBFS preschool repeater flag – provided [optional]</li> <li>• Child-specific preschool program start date for the year</li> <li>• Child-specific preschool program end date for the year</li> <li>• Service provider organisation- Australian state/territory identifier (<a href="#">METEOR Id 289083</a>)</li> <li>• Service provider organisation – service activity type, early childhood education and care (<a href="#">METEOR Id 762656</a>)</li> </ul> <p><u>Elements derived by the ABS:</u></p> <ul style="list-style-type: none"> <li>• Enrolment at the enrolment reference point in Term 2 indicator</li> <li>• Child-specific enrolment status</li> <li>• YBFS eligibility</li> <li>• Child-specific YBFS status</li> <li>• YBFS preschool repeater flag – derived</li> <li>• SEIFA (2021 Census, ASGS Edition 3) cluster</li> </ul> <p><u>Other data elements:</u></p> <ul style="list-style-type: none"> <li>• Policy target hours (annual)</li> <li>• Enrolment reference point in Term 2</li> </ul>
Computation	<p>Numerator <math>\div</math> Denominator <math>\times</math> 100 = Proportion</p> <p>Refer to flowcharts 1 and 2.</p> <p>Flowchart 1: Episode to child process flow, and calculation of child attendance hours.</p> <p>Flowchart 2: Proportion (x%) of children attending a preschool program (or programs) for y% of 600 hours in the child-specific YBFS.</p>
Presentation	Proportion
Identifiers	<p><u>Person ID (Statistical Linkage Key (SLK) 581):</u> The SLK will provide a unique identifier for the vast majority of children. For the small percentage who may have the same SLK, legitimate duplicates can be flagged by jurisdictions (within a dataset), by using a child/student database to check the name, date of birth, and sex of each child with an identical SLK. Matching SLKs that are not coincidental should be detected and flagged appropriately by jurisdictions.</p> <p><u>Geographic information:</u> Child level geographic information will be used to assist with matching episode records to enable estimation of attendance and enrolment information at the child level. Jurisdictions to supply a list of child addresses to ABS for geo-coding (timing to be negotiated bilaterally). Where agreed, child addresses will not be retained by the ABS.</p> <p>Service provider information will be used to determine the <i>Home-state</i> of the child and may be used to assist with matching episode records.</p>
Identifier and geographic data elements	<p><u>Child/URL data elements:</u> <u>Provided by jurisdictions:</u></p> <ul style="list-style-type: none"> <li>• Statistical linkage key 581 (<a href="#">METEOR Id 349895</a>)</li> <li>• Child – SLK Sequential Match code</li> <li>• Address – Address line (<a href="#">METEOR Id 594217</a>)</li> <li>• Address – Suburb/town/locality name (<a href="#">METEOR Id 429889</a>)</li> </ul>

	<ul style="list-style-type: none"> <li>• Person – Australian state/territory identifier (<a href="#">METEOR Id 286919</a>)</li> <li>• Address – Australian postcode (<a href="#">METEOR Id 611398</a>)</li> </ul> <p><u>Derived by the ABS:</u></p> <ul style="list-style-type: none"> <li>• Person – area of usual residence, geographic location (Mesh Block) code</li> <li>• Address – statistical area level 1 (SA1) code (ASGS Edition 3)</li> </ul> <p><b>Service level data elements:</b></p> <p><u>Provided by jurisdictions</u></p> <ul style="list-style-type: none"> <li>• Service provider organisation – Organisation identifier (<a href="#">METEOR Id 731385</a>)</li> <li>• Organisation – organisation name (<a href="#">METEOR Id 453823</a>)</li> <li>• Address – Address line (<a href="#">METEOR Id 594217</a>)</li> <li>• Address – Suburb/town/locality name (<a href="#">METEOR Id 429889</a>)</li> <li>• Service provider organisation – Australian state/territory identifier (<a href="#">METEOR Id 289083</a>)</li> <li>• Address – Australian postcode (<a href="#">METEOR Id 611398</a>)</li> </ul>
Calculation rules	<p><u>Child level data:</u></p> <p>This performance indicator requires child level data. Children may attend more than one episode of preschool. To estimate child level attendance hours, attendance hours must first be estimated at the episode level, and then summed, where a child has more than one episode of preschool. Child level attendance hours will be estimated using the following steps:</p> <p><b><i>Step 1 – Estimate annual attendance hours for each episode</i></b></p> <p>Annual attendance hours for each episode will be estimated using the following steps:</p> <ul style="list-style-type: none"> <li>• If provided, ‘Operationally unavailable hours (within attendance reference period)’ are added to ‘Hours attended in attendance reference period (Term, or CCSS weeks)’</li> <li>• ‘Hours attended in attendance reference period (Term, or CCSS weeks)’ (where CCSS weeks are aggregated to the term level), will be divided by ‘Program weeks (attendance reference period)’ to calculate weekly average hours.</li> <li>• To extrapolate to the program-year, weekly average hours will then be multiplied by total ‘Program weeks (annual)’ for that episode.</li> </ul> <p><b><i>Step 2 – Where a child has multiple episodes of preschool, sum estimated annual attendance hours for each episode, and assign to the Home-state (based on Appendix A.1. rules).</i></b></p> <p><i>The Home-State is the state of the child’s service address for the enrolment reference point or period, where that service records the greatest number of program hours for the child [up to 600hrs]. If a child has equal program hours across two or more states, for the purposes of the attendance performance indicators the Home-State is the state for which the greatest number of attendance hours have been recorded (Appendix A1 glossary).</i></p> <p>For children who were enrolled simultaneously across more than one jurisdiction at the enrolment reference point in Term 2, attendance hours in each state will be extrapolated according to the state specific attendance reference period. Extrapolated hours for each jurisdiction will be summed and assigned to the <i>Home-state</i> (Appendix A1. 4.10.2). For children who were enrolled consecutively in more than one jurisdiction in Term 2, only Term 2 data will be used and any periods of interstate attendance during consecutive enrolments outside of Term 2 will not be counted (Appendix A.1. 4.10.3).</p> <p>For further information on creating unique child records from episode data, including how to treat duplicate episodes, multiple attendance reference periods and consecutive and simultaneous interstate enrolments, see ‘Flowchart 1: Episode to child process flow, and estimation of annual child attendance hours’.</p>

### Determining the child-specific YBFS

A child will be counted as being in the child-specific YBFS if, according to state rules, their birthdate means they are:

- eligible for preschool, and they become eligible for school the following year, but school is not compulsory the following year ('YBFS - school optional next year'), or
- eligible for preschool, and school is compulsory the following year ('YBFS - school compulsory next year'); and
  - if they were in the YBFS-age range in the previous year, they were not enrolled in a YBFS preschool program in the previous year. This will be established by using a combination of:
    - YBFS preschool repeater flag – provided
    - YBFS preschool repeater flag – derived (derived by linking unit level preschool data with the previous year's preschool data)

This will be operationalised through the following steps:

1. Children will be grouped in to the following four categories (described in data element 'YBFS eligibility') according to their date of birth, age at which children become eligible for YBFS preschool (state-specific), and compulsory school age (state-specific):

1. = Younger than the YBFS-age range
2. = YBFS–school optional next year
3. = YBFS–school compulsory next year
4. = Exemption/exception to compulsory school

2. If a child is:

- categorised as YBFS–school optional next year and
- they are enrolled in a 600-hour or more preschool program (or programs)
- Then, child-specific YBFS status = 'Yes'.

Or, if a child is:

- categorised as YBFS–school compulsory next year and
- they are enrolled in a 600-hour or more preschool program (or programs), and
- in the previous year they were not enrolled in a 600-hour or more preschool program (or programs) or were enrolled in a 2YBFS program (as determined by linking to preschool enrolment data for the previous year)
- Then, child-specific YBFS status = 'Yes'

All other combinations result in a child-specific YBFS status of 'No'.

Note: Where an alternative definition of preschool has been agreed in a state's Implementation Plan, consistent with the PRA, only programs that are consistent with the definition will be counted when calculating performance indicators.

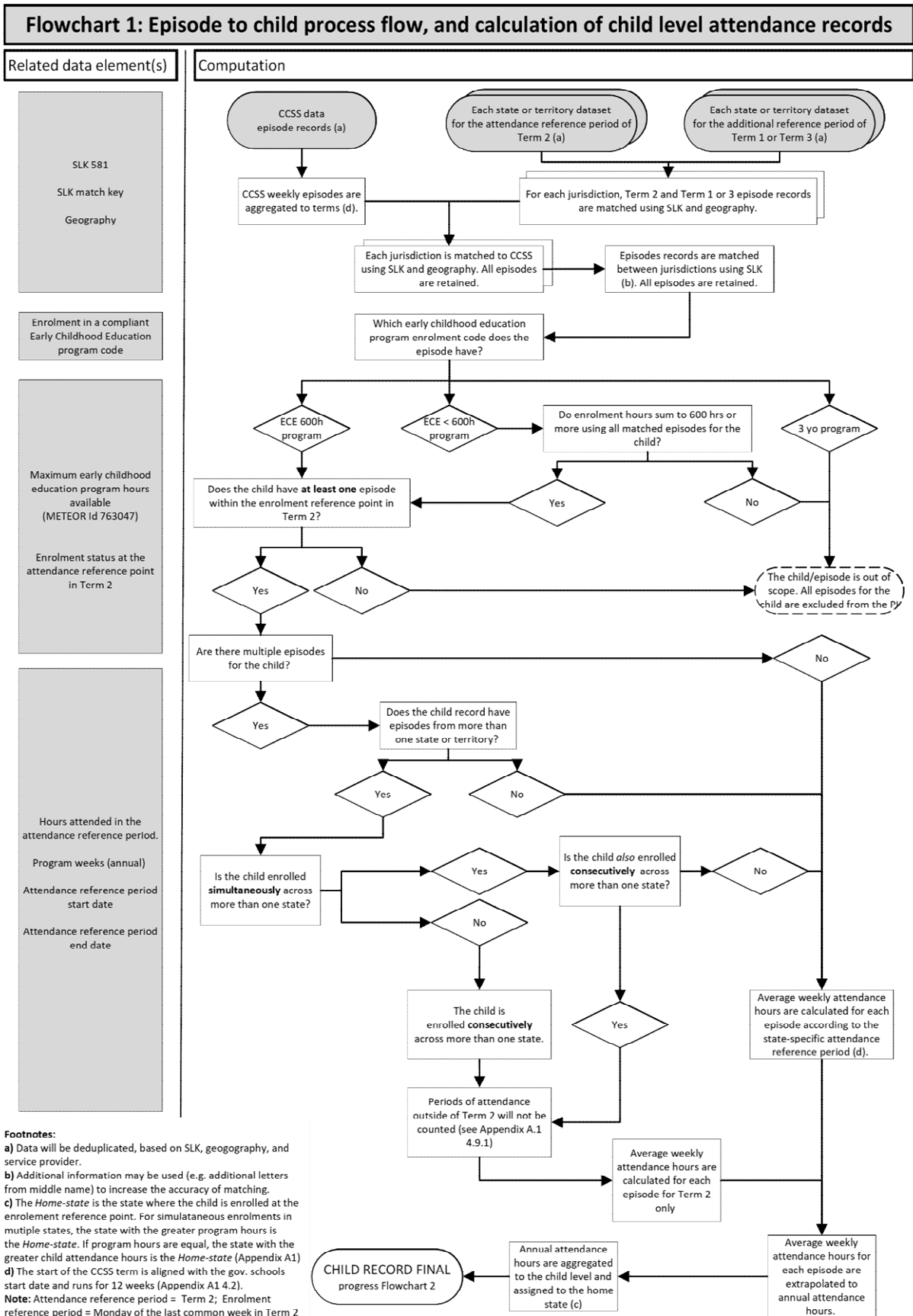
### Numerator:

The numerator will be calculated by summing all children in the child-specific YBFS who reside in areas with a SEIFA IRSD quintile of 1 and who:

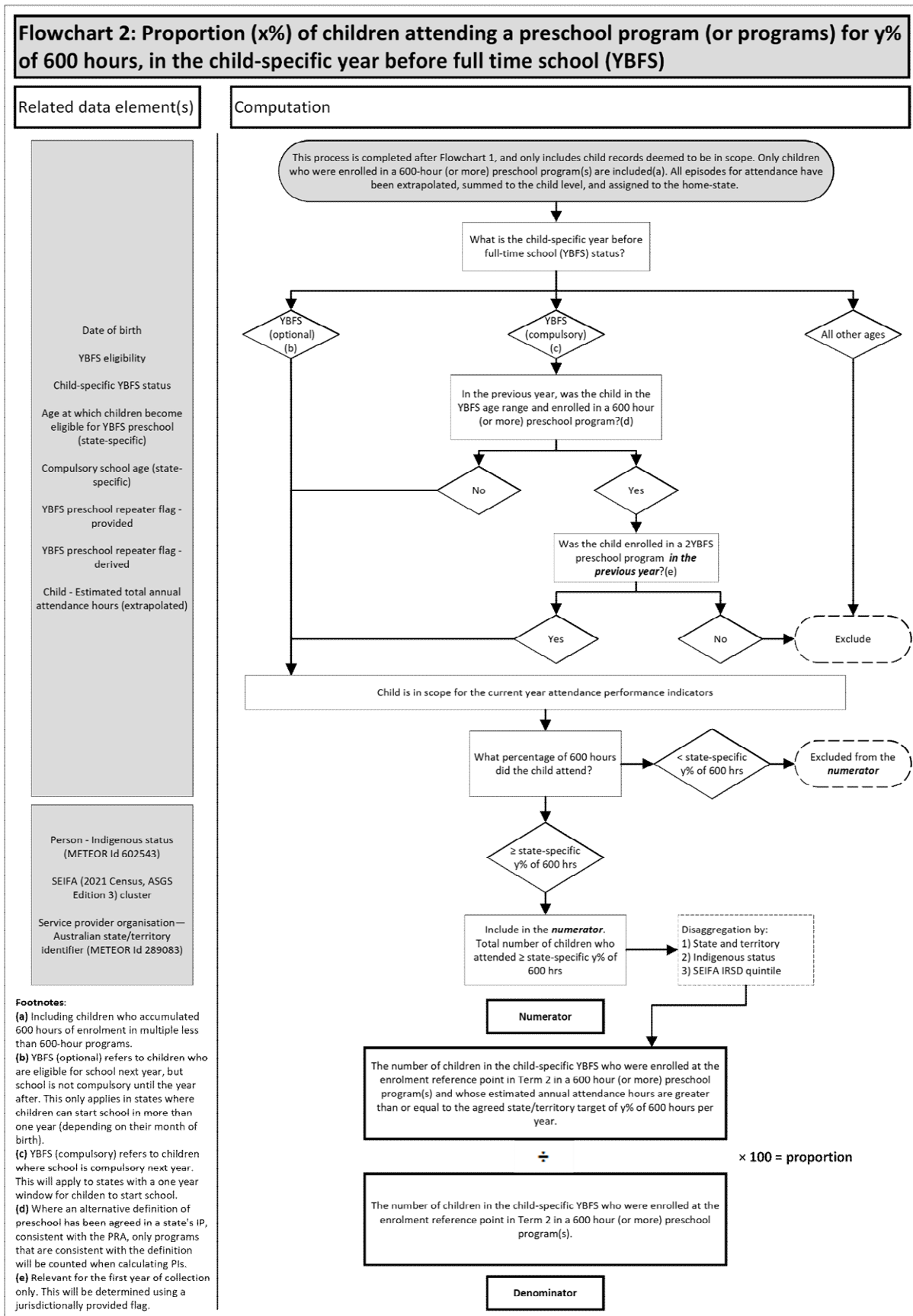
- Have an 'Enrolled in a preschool program of 600 hours or more' (code 1) response to the data element 'Enrolment in a preschool program code', or
- Have an 'Enrolled in a preschool program of less than 600 hours' (code 2) response for 'Enrolment in a preschool program code' but for matched episodes, the element 'Maximum annual preschool program hours available' totals at least 600 hours, and
- Are enrolled in a preschool program (or programs) at the enrolment reference point in Term 2, and
- Whose attendance hours during the attendance reference period are extrapolated to estimate annual hours equal to or greater than the agreed state or territory target of y% of 600 hours.

	<p><u>Denominator:</u> The denominator will be calculated by summing all children who reside in areas with a SEIFA IRSD quintile of 1 in the child-specific YBFS and who:</p> <ul style="list-style-type: none"> <li>• Have an 'Enrolled in a preschool program of 600 hours or more' (code 1) response to the data element 'Enrolment in a preschool program code', or</li> <li>• Have an 'Enrolled in a preschool program of less than 600 hours' (code 2) response for 'Enrolment in a preschool program code' but for matched episodes, the element 'Maximum annual preschool program hours available' totals at least 600 hours, and</li> <li>• Are enrolled in a preschool program (or programs) at the enrolment reference point in Term 2.</li> </ul>
Data collection details	
Data source(s)	<p><u>Numerator:</u> NECECC Attendance (June) <u>Denominator:</u> NECECC Enrolled (June)</p>
Frequency of data source collection	<p><u>Numerator:</u> Annual <u>Denominator:</u> Annual</p>

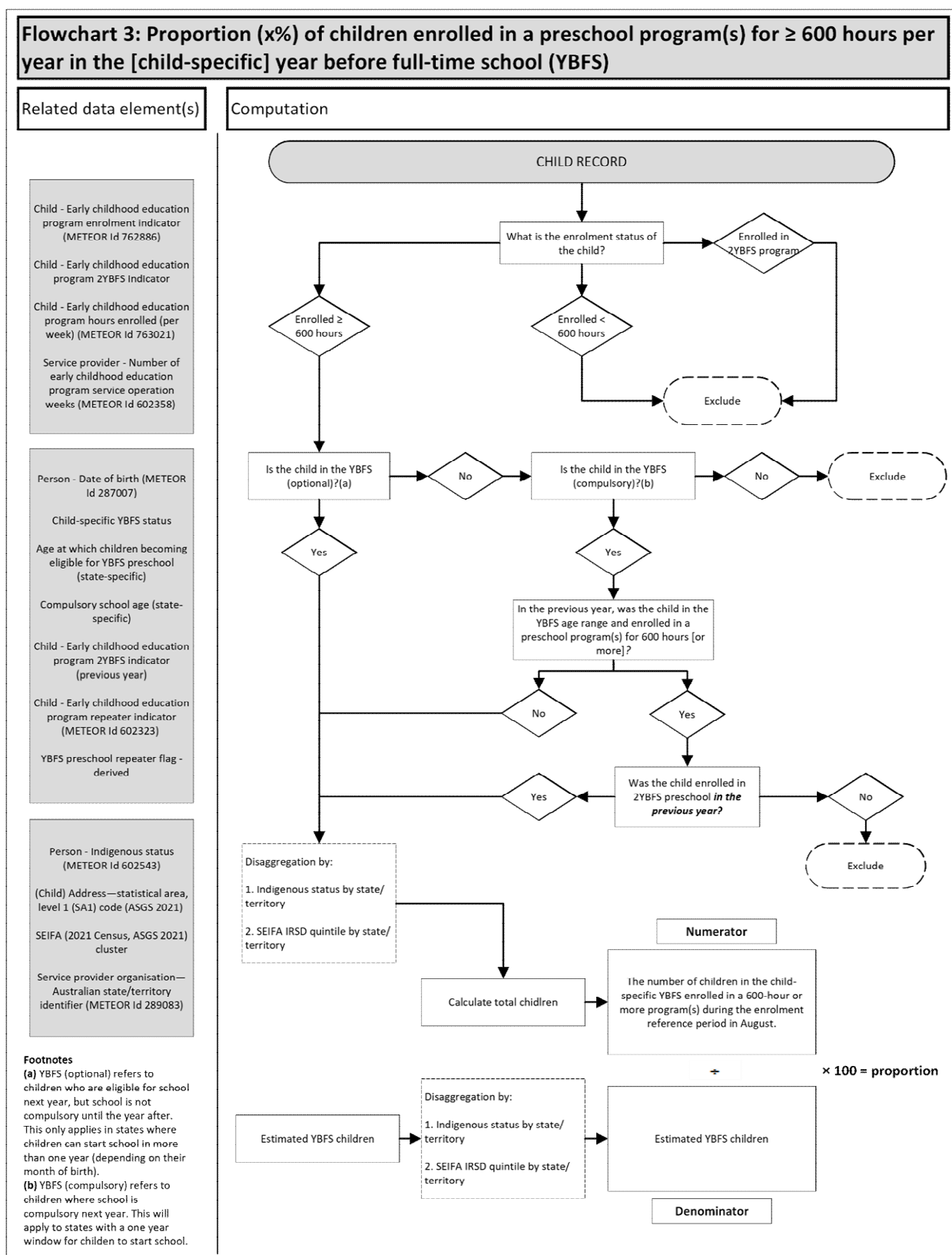
# Flowchart 1: Episode to child process flow, and calculation of child level attendance hours



# Flowchart 2: Proportion (x%) of children attending a preschool program(s) for y% of 600 hours per year, in the (child-specific) year before full-time school (YBFS)



# Flowchart 3: Proportion (x%) of children enrolled in a preschool program (or programs) for 600 hours or more in the (child-specific) year before full-time school (YBFS)





## **Appendix B.1: Creating unique child records from episode records**

This appendix summarises, for background purposes only, how unique child records have been created from episode records in the NECECC. Methods have improved over time in order to maximise the accuracy of this process and may continue to do so.

### ***Linking records across data sources***

The NECECC utilises and combines data from different sources. Within and across the individual data files supplied by data providers, there may be more than one episode record for a single child. These records consequently need to be matched in order to produce accurate child statistics. The following data elements have been used for matching records between multiple data sources:

- Statistical Linkage Key (SLK)
- SLK Match Code
- Geographic location of child's residence

When linking within a state, territory or Commonwealth submissions, if two records have the same SLK and the same SLK Match code, then they are considered as belonging to the same child. If the same SLK does not link on the SLK Match code, or no Match code is supplied, they are considered as being separate children.

When linking across state, territory and Commonwealth submissions, the SLK and child geography are used to identify records that belong to a single child.

These linking processes occur after the ABS has identified and reconciled/removed duplicate episode records from the different data sources. This reconciliation uses service provider names and address information.

### ***Reporting Child Counts***

After completing linking, a data item is created to mark a child with records:

- solely from a state/territory source
- solely from a CCSS source
- from both a state/territory and a CCSS source.

Where two or more child episodes are linked, the unique characteristics within each episode are used to formulate the characteristics of the corresponding unique child record. Flowchart 1 provides an example of how the child level data items are produced from episode level information (eg total hours enrolled is calculated from the child's individual episodes).

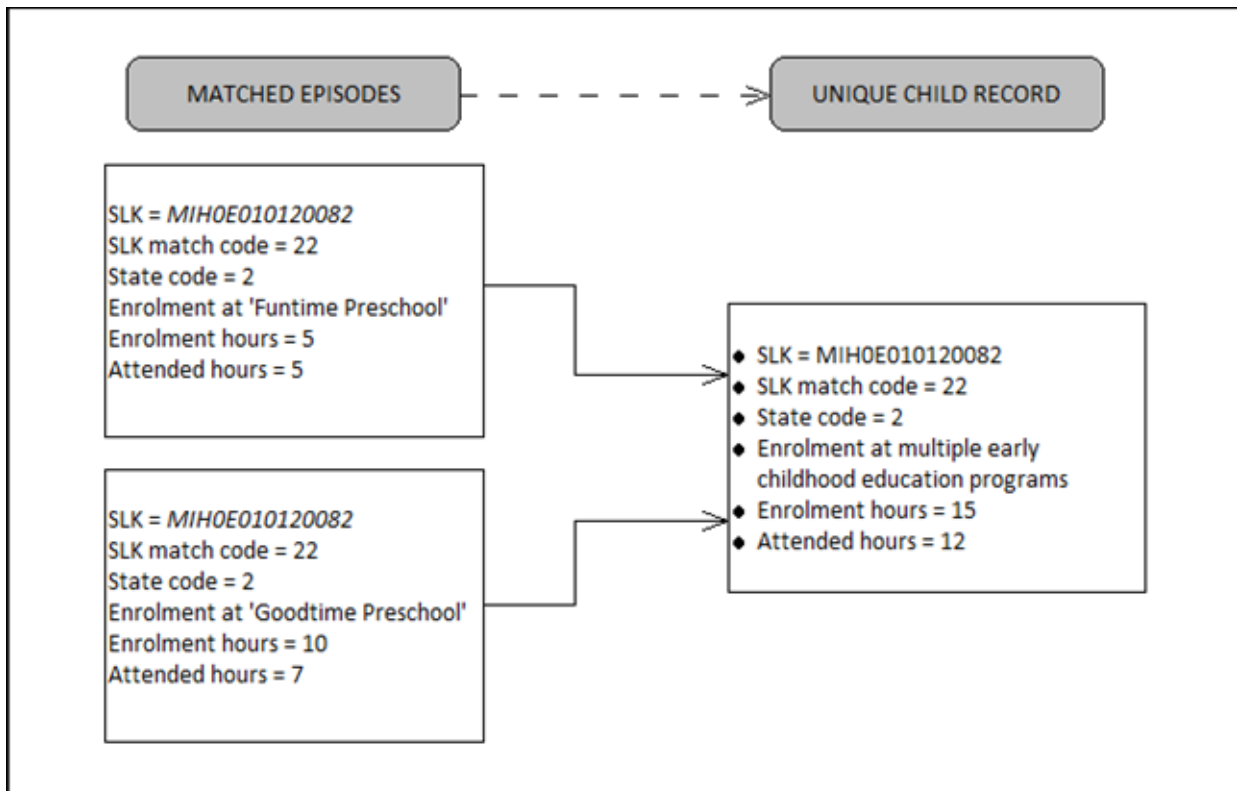


Figure A.1 Episode to child level process flow (example for the August collection)

## List of flow charts

Flowchart 1: Episode to child process flow, and calculation of child attendance hours .....	30
Flowchart 2: Attendance Computation Flow .....	31
Flowchart 3: Enrolment Computation Flow .....	32

## List of figures

Figure A.1: Episode to child level process flow (example for the August collection) .....	33
---	----

## References

ABS (Australian Bureau of Statistics) 2022. Preschool education. [Preschool Education, Australia, 2022 | Australian Bureau of Statistics \(abs.gov.au\)](#)

ABS (Australian Bureau of Statistics) 2022. Preschool education: methodology. <https://www.abs.gov.au/methodologies/preschool-education-australia-methodology/2022>

ABS (Australian Bureau of Statistics) 2022. Preschool Education. Statistics about preschool education, including enrolment, attendance, fees and service providers. [Preschool Education, 2022 | Australian Bureau of Statistics \(abs.gov.au\)](#)

AIHW (Australian Institute of Health and Welfare) 2020. Early Childhood Education and Care Data Set Specification. [Early Childhood Education and Care: Unit Record Level NMDS 2021 \(aihw.gov.au\)](#)

Data from the NECECC have been published annually by the ABS and are available on their website: <https://www.abs.gov.au/statistics/people/education/preschool-education-australia/latest-release> for the latest release and previous releases.

NECECC is underpinned by data standards specified in the Early Childhood Education and Care National Minimum Data Set (ECEC NMDS), which is maintained by the Australian Institute of Health and Welfare (AIHW) in the online metadata registry, METEOR, for the latest standards.